

Dental Hygiene

**WEBER STATE UNIVERSITY
CANDIDATE INFORMATION
HANDBOOK**
For the Western Regional Board Examination

Weber State University
3850 Harrison Blvd. /University Circle
Ogden, UT 84408

<http://www.weber.edu>

School Coordinator: Nicolas Salomon

Phone (801)626-6131 or www.nicolassalomon@weber.edu

Fax (801)626-7845



Welcome to Weber State University Dental Hygiene Clinic

This handbook has been prepared to assist dental hygiene candidates for the Western Regional Board Examination. If additional information is needed after reading this handbook, please contact Mr. Salomon, WREB school coordinator at (801)626-6131 or e-mail nicolassalomon@weber.edu.

1. **Airline and Airport Information**

Salt Lake International Airport supports major carriers who fly to Salt Lake; however you will need ground transportation to Weber State University from the airport. The distance is approximately 36 miles to the campus.

Transportation from the airport:

Express Shuttle (800)397-0773 (\$33.00 to Ogden)

Airport Shuttle (801)596-1600 www.xpressshuttleutah.com

City Cab (801)363-5550

Rental Car

Salt Lake is served by all major car rental companies.

2. **Lodging**

Hampton Inn

2401 Washington Blvd.

Ogden, UT 84405

General information (800)426-7866 or www.HamptonInn.com

Local # (801)394-9400 Reservations

Ogden Marriott Hotel

247 24th Street

Ogden, UT 84401

(801)627-1190 or www.Marriott.com

Dental Hygiene Facility and Services

Location of Clinic:

The Dental Hygiene Clinic is located within the Marriott Health Professions Building #34 MH. Take the 3950 S. Harrison Blvd. entrance into the campus, turn then go right at the Turnabout and follow the street until you come to a stop sign (Taylor Ave.) Turn left; proceed until you come to a large parking lot (Parking lot A6) in front of the Football Stadium. Look for the Dental Hygiene Clinic sign west of the south goal post of the Football Field on the sidewalk and front window of the building. A map has been enclosed with this information. You may also go to the school website at weber.edu (click on Map & Directions).

Parking:

Parking is available in parking lot A6 which is in front of the Dental Hygiene Building. No parking pass is needed for this exam as long as you park in front of the building. If you do receive a parking ticket, please give it to Mr. Salomon, WREB school coordinator.

Responsibility for Storage:

Applicants are responsible for purses, all personal items, clothing supplies and equipment, since storage facilities with locks are not available.

Building Hours:

The building will be open from 6:30 am to 6:00 pm during the exam unless otherwise requested by the examiners.

Food Services:

Food and beverage machines are located downstairs in the Dental Hygiene building. Restaurants are also located near the campus.

Patient Screening and Radiographs

All candidates may use the Dental Hygiene Clinic to screen patients including the use of radiology facilities. Screening appointments must be scheduled with the clinic by calling (801)626-6131 and will be on a space available basis. All candidates must provide their own XCP kit and mounts for patient x-rays. Double pack film is available for purchase for \$2.00 per film.

Preparing for the Board Exam

Weber State cannot provide patients for candidates.

A practitioner(s) from the school is not available to administer local anesthesia to a candidates' patient. There are no exceptions to this policy.

The clinic has A-Dec dental units which are equipped with quick disconnect hook-ups for DENTSPLY Cavitron units. Weber State does rent a DENTSPLY Cavitron for use during the exam. Candidates are responsible for providing a 25K tip/s for the Cavitron unit. **No tips are available for rent.** Candidates who need these tips should contact their local dental supply company in advance of the exam to purchase these.

If candidates are providing their own Cavitron unit and hand piece during the exam, an A-Dec quick disconnect plug must be on the Cavitron hose in order to connect to the clinic dental unit. A two hole connection is needed for any hand piece to adapt to the dental hand piece tubing. No quick disconnect plugs or hoses are available at Weber State.

Rental forms for the Cavitron will be available at the clinic front desk on your clinic day or orientation day. This form should be completed and returned with your payment on the day of your exam. Payment for equipment rental should be made with cash, money order, or a credit card. **No personal checks are accepted.** The rental fee for a Cavitron is \$45.00.

Central supply cabinet

Each bay in the clinic has 4 dental units and a central supply cabinet. All disposables provided by the school are located at this cabinet or in the top two storage drawers at each unit.

Infection Control

Disinfectant towels may be used to sanitize the contaminated areas on and around the dental unit. Infection control barriers are supplied by the school and consist of a headrest cover, a cover for the bracket tray, small barrier sleeves for the air water syringe & suction holders and stick tape for other areas. Care should be taken when removing all barriers from the dental light on/off switch and saliva ejector tip as the rubber portions may come off with the barrier. Radiology heads must be covered with a barrier. Controls and the door handle should be covered with sticky tape. The x-ray room door must be closed in order to expose any X-ray.

Personnel Protective Clothing and Equipment

Appropriate protective clothing should be worn during the exam. The school does not provide lab coats.

Disposable gloves and masks are available from the supply cabinet near the dental unit.

Candidates are to provide their own OSHA acceptable protective glasses for themselves and their patients.

Antibacterial soap is available at all sinks within the clinic.

Hazardous Waste

Any blood soaked waste is considered hazardous and must be disposed of in a biohazard trash container which is located in clinic. A small biohazard bag may be attached to the side of the bracket tray cover at your unit. Do not attach to an area that does not have a barrier on it. At the end of each session, the bag should be sealed and disposed in the large biohazard waste container in clinic.

Disposal of regular waste

All barriers, gloves, and waste that are not blood soaked should be disposed in the trash container with the black bag located under the supply cabinet near the unit.

Sharps Disposal

All needles, anesthetic cartridges and any potential sharps are to be placed in the plastic sharps containers located at each unit. **NO NEEDLE PROP CARDS OR OTHER WASTE ARE ALLOWED IN THE SHARPS CONTAINER.**

Autoclaves

Weber State has three steam autoclaves for your use to sterilize your instruments after the exam. Please allow up to 2-3 hours to sterilize all instruments. Sterilization bags are available and should be marked with your candidate number. Please do not leave your instruments unattended while you wait to use the autoclaves.

Emergency protocol

If an emergency should arise, the Chief Examiner should be notified immediately. Emergency personnel can be reached by press 9 to get an off campus line and the 911. A cordless telephone is available near the Chief Examiner's desk.

A portable oxygen unit and an emergency kit are available in the clinic near the Chief Examiner's desk.

Items supplied by Weber State

- Disposable air/water syringe tip
- Biohazard bag
- Sterilization bags (no wraps are available)
- Infection control barriers
- Headrest covers
- Cotton applicator
- Disinfectant wipes
- Paper cups
- Facial Tissue
- Topical anesthetic
- Prophylactic paste
- Gauze Sponges 2x2
- Latex (powder free) and non-latex (powder free) gloves
- Hand soap
- Ear loop face masks
- Mouthwash
- Paper towels
- Patient napkins / Bibs
- Suction(HVE) and saliva ejector tips
- Autoclave tape
- Tray and tray cover

Dental Hygiene Candidate must provide

- XCP Kit
- Prophy hand piece and Prophy angle
- Protective glasses for the clinician and patient
- Oral hygiene supplies for patient education (brushes and floss)
- Pen and Pencils
- Ultrasonic tip 25K (if renting a Cavitron from Weber State)
- Sharpening stone
- Uniform or lab coat
- Barrier Gown
- X-ray mount
- Sphygmomanometer/Stethoscope
- Dental syringe
- Anesthesia supplies; anesthetic solution, needles, locking cotton pliers
- Needle prop device/card

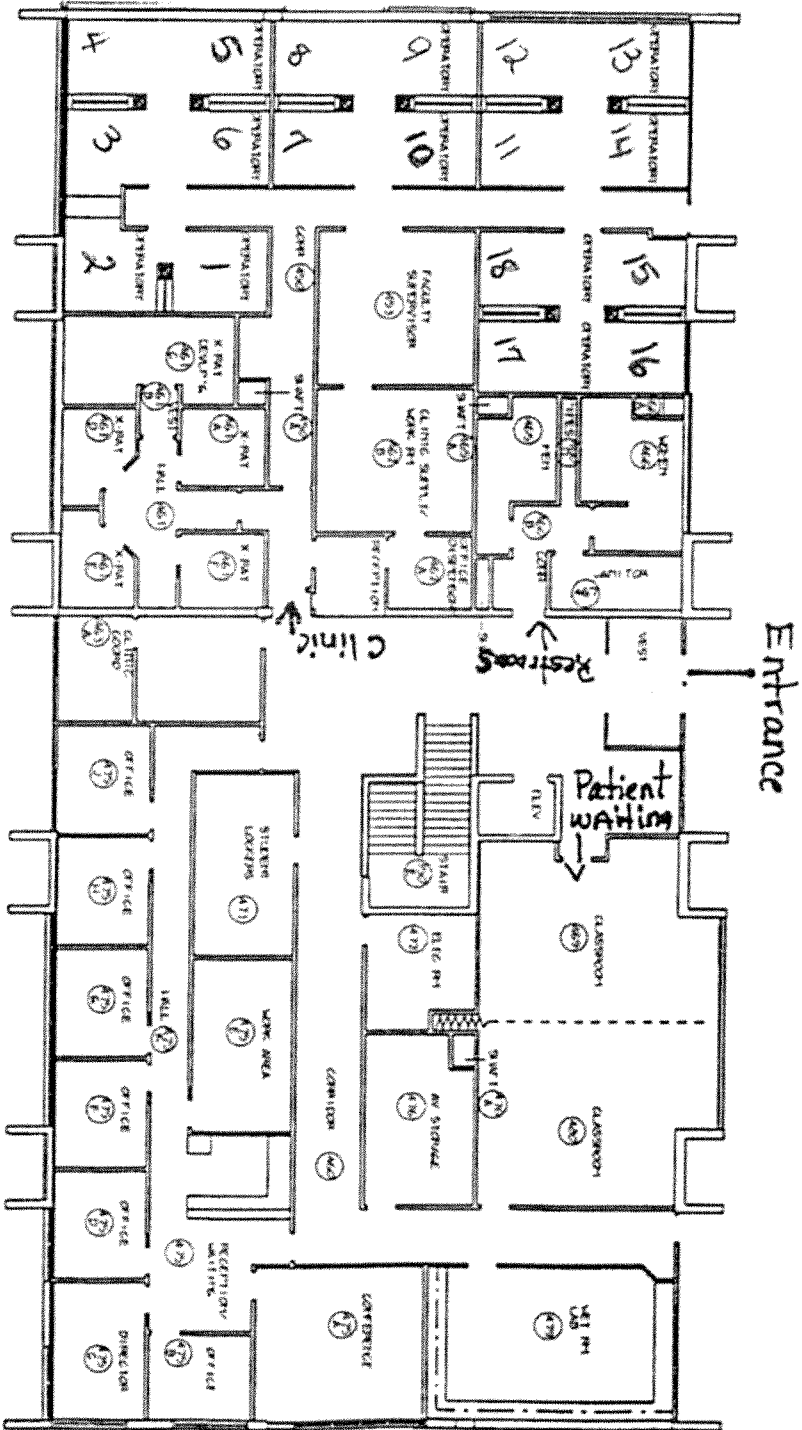
Dental Hygiene Instruments

Weber State does not provide any instruments. It is recommended that you bring additional instruments in case you or the examiner drops an instrument during the exam.

WEBER STATE UNIVERSITY
DENTAL HYGIENE CLINIC

FLOOR PLAN

A & Parking



8' 4' 0" 0"
GRAPHIC SCALE

SYMBOLS

