

School Information Packet



WREB Anesthesia Exam

March 5-7, 2010

The **University of New Mexico** welcomes all candidates, patients and examiners for the **WREB** Anesthesia Exam held March 5-7, 2010 (Fri-Sun). The exam site will be at the University of New Mexico Dental Hygiene Building, located at 2320 tucker NE, Albuquerque, NM. The building is located on the S.E. corner of Yale and Tucker. Please see attached map for more details.

Parking Passes:

The University of New Mexico will provide parking passes at no charge on Friday March 5TH. Please acquire your pass from the receptionist at the administration side. Parking will be free on March 6th and 7th for candidates and their patients. Handicap parking is available in front of the building and may be utilized if you or your patient has a valid handicap sticker. Candidates are asked not to park in spots marked for patients or metered parking.

Hotel Information:

Candidates are to make their own hotel reservations. The following is a list of hotels near the University:

Hilton	1901 University NE	(505) 884-2500
Embassy Suites	1000Woodward Place NE	(505) 245-7100
Hyatt Regency	330 Tijeras Ave. NW	(505) 842-1234
MCM Elegante	2020 Menaul NE	(505) 884-2511

Sterilization and Infection Control Policy:

You may use your ultrasonic cleaners located in the dispensary room (room # 249). Bag and label all instruments and turn them into the dispensary to be autoclaved. No plastic or rubber items will be sterilized. Candidates are asked to schedule sterilization time into their traveling schedule.

The following will be provided for disinfection:

- Surface disinfectant pads
- Paper towels
- Blue CSR wraps
- Bio-hazardous bags for chairs
- Soaps
- Autoclave bags various sizes
- Autoclave Tape

*Candidates are to bring their own utility gloves.

All candidates are to use personal protective equipment while disinfecting their area and while cleaning and bagging instruments in the dispensary.

Infection Control:

The following are to be disinfected in between patients. A marked container of 4x4 moistened with Opti-cide is located at each cubicle.

- Operators chair
- Assistants chair
- Patients chair
- Low/ high speed at hand piece receptacles (if applicable)
- House attachments
- Air/water syringe
- All evacuator hoses
- Adec power switch and water control knobs
- Adec cart tops, edges and handles
- Dental light handles and switch
- All control switches for patient chairs
- All other operatory counter tops and edges
- Pens and pencils to be used in charting

Place all disposable products in trash. Those items which are mandated by OSHA, should be put in the biohazard bag and given to the floor assistant to dispose of. Each cubicle has a sharps container.

Set up of a cubicle:

Disinfect all surfaces before seating patient. Please place a chair cover on the chair as well as the delivery systems. Cover for the light switch and light handles should also be placed as well as sheath covers for the air water syringes and the saliva ejectors.

After the patient is dismissed, remove soiled gloves, put on utility gloves and remove all covers and disinfect the area. Run a gallon of cleaner through suction lines. A bucket and solution for the lines are located in the cabinet under the sink. Turn Adec systems off.

Expandable materials for Candidates:

The following list of expandable materials will be available for candidates during the anesthesia exam.

- 2x2 gauze
- Anti –microbial mouth rinse
- Bracket and syringe covers (cover all)
- Chair covers
- Saliva ejectors
- Drinking cups
- Masks
- Cover gloves

- X-ray barriers
- Disposable air/water syringes
- Beta dine solution
- Topical anesthetic
- Anesthesia w-w/o vasoconstrictors
- Patient bib
- Gloves: sm,med,lg,xl,nitrile

Candidate should bring:

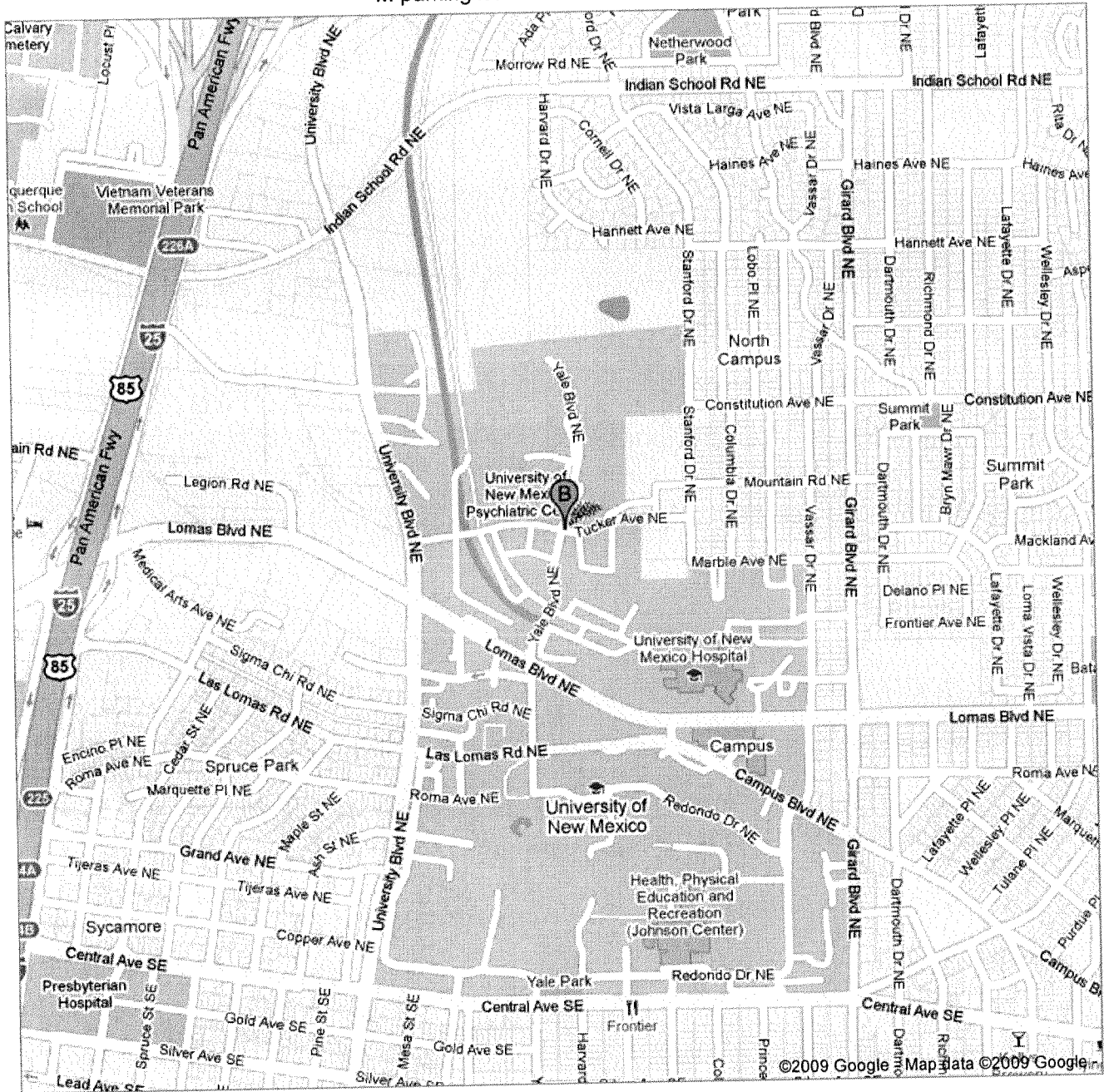
- Protective eyewear for themselves and the patient
- Prophylaxis angles
- XCP for BW & FMX if needed
- Instruments
- Utility gloves
- Cavitron unit
- Cavitron inserts
- Scrubs and smock
- Hand pieces

**Please note that the UNM Division of Dental Hygiene does not provide or rent out any of the following:

- Cavitron Units
- Cavitron Inserts
- Hand pieces
- Scrubs / Smocks
- Instruments
- Utility Gloves
- Protective eyewear

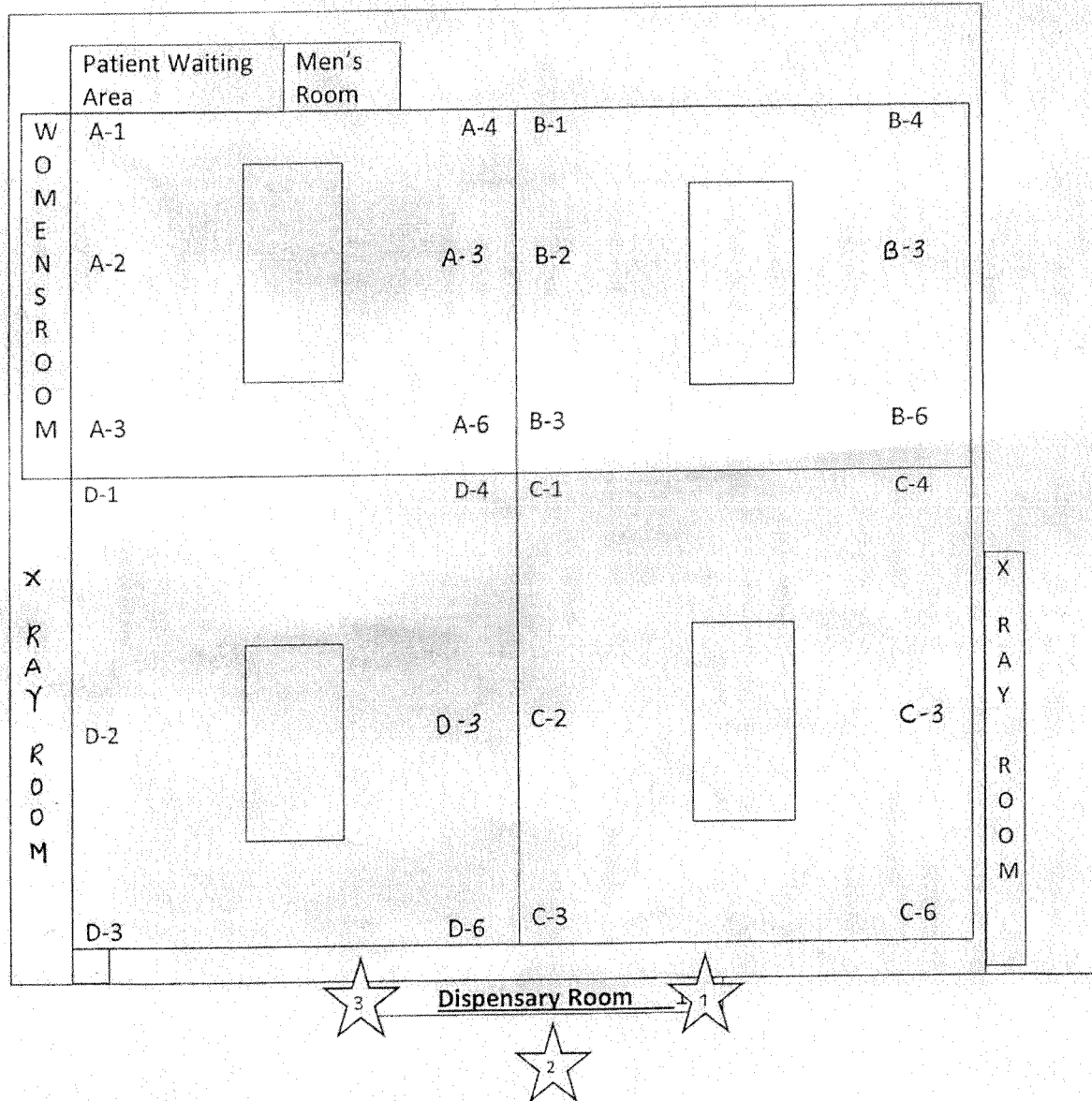
Google maps

2320 Tucker Rd.
Novitski Hall
N. Of Lomas / E. of University
M parking lot - SE corner of Yale and Tucker



UNM Dental Hygiene Clinic Map:

N



1. First Aid Kit (outside dispensary)
2. Medical Emergency Kit (inside dispensary in labeled cabinet)
3. Oxygen Canister (outside dispensary West Wall)