



**School of Dental Hygiene  
1150 E. Washington Street  
Phoenix, AZ 85034**

## **WREB Dental Hygiene and Anesthesia Examination 2010 Fact Sheet**

### **ARRIVAL TIME and PARKING**

The building will be open at 7:00 am each day of the exam. Parking is available on the south and west sides of the building and on 12<sup>th</sup> Street.

### **CLINIC FACILITY** (See attached line drawing)

Each cubicle (12 total) has the following equipment:

- Adec dental chair & light\*
- Cavitron unit\*\*
- 4 hole handpiece hose
- Suction equipment
- View box
- Operator stool

\*All units accommodate right or left-handed operators.

\*\*Units do **NOT** have quick disconnects for candidates' personal ultrasonic machine.  
(Dentsply autoclavable sterimate sheaths and 30k inserts fit these units. *If you own a Dentsply Cavitron the sterimate handle may fit the units at Rio Salado College*)

### **EQUIPMENT RENTAL** (See attached Supplies / Equipment Rental Form)

The following equipment is available for rental the day of the exam. No advance reservations are necessary.

- Cavitron Sterimate Handpiece (required if you plan to use Dentsply Cavitron unit)
- Cavitron Tips – 30k: \***NO** “slimline” inserts are available for rent.
  - FSI-10
  - FSI-1000
  - FSI-100
- Instruments:
  - Probe – UNC 12
  - EXD 11/12 Explorer
  - Bite Blocks
  - Aspirating syringes **ONLY** – **NO** anesthetic solution or needles are supplied.

- Dental Mirror
- Hemostats
- Digital Radiographic supplies
  - Panelipse
  - FMS/Periapicals/BWS

### **X-RAYS**

Digital x-ray equipment is available for radiographs.

### **INFECTION CONTROL**

The following lists the recommended protocol for cubicle disinfection. All supplies are located on the countertop adjacent to the dental units.

### **SURFACE DISINFECTION**

Using a *2-Wipe* technique with a pre-saturated wipe (1<sup>st</sup> wipe – clean, 2<sup>nd</sup> wipe – disinfect)

Disinfect the following items:

- Instrumentation tray, unit\*, air/water syringe, hanger & hoses
- Dental chair arms
- Dental light handles (ONLY)\*
- Evacuation syringe, hoses & hanger
- Operator stool – back & adjustment levers
- Other personal items used during treatment

\*Avoid dental light shield & all electrical parts of unit, especially “Touch Pad for Chair Control.”

### **BARRIER WRAP**

After the final disinfection has sat for 10 minutes, the unit is ready for barrier wrapping. All barrier wrap is located on the countertop adjacent to the dental units.

The clinic uses the following which will be provided:

- Dental Chair Back and Operator Stool Back – Plastic Chair Wrap
- Operator Stool Adjustment Levers – Plastic “T” Wrap
- Light Handles – Plastic “T” Wrap
- Evacuation Arm – Plastic Chair Wrap
- Saliva Ejector/Hose – Plastic Sleeves
- Instrumentation Tray/Arm – Plastic Chair Wrap
- Air/Water Syringe – Plastic Sleeves

## INSTRUMENT STERILIZATION

Instrument sterilization will be available for those who desire it. Please **clearly** label the autoclave bag with your full name and date. **NO** candidate number please! Place your instruments in the bag and turn it in to the floor assistant. The instruments may not be available on the day you take the exam, depending upon your exam time. **There will be NO sterilization at the end of the last exam day.**

## WASTE DISPOSAL

Small biohazard bags will be available to tape to the instrumentation arm. Sharps containers are available in each cubicle. All remaining waste can be placed in the garbage can at each bay.

## DISPOSABLE MATERIALS

- Patient Napkins
- Surface Disinfectant Wipes
- Sterile 2X2 Gauze Squares
- Cotton Tip Applicators
- Antimicrobial Mouthwash
- Saliva Ejectors
- Air/Water Syringe Tips
- Facial Tissue
- Paper Toweling
- Autoclave Bags/Tape
- Antimicrobial Hand Soap
- Operator Gloves (Vinyl)
- Plastic Trays
- Tray Covers
- Masks
- Barrier Wrap
- Prophylaxis Paste
- Over gloves
- Drinking Cups

Topical Anesthetic

## EMERGENCY PROTOCOL

- The person discovering the emergency will alert the WREB official.
- The WREB official will assist by:
  - Alerting the Rio Salado College attendant
  - Facilitating the administration of oxygen/medical emergency kit/AED
- The basics of CPR will be implemented by the WREB official – or – person(s) discovering the emergency.
- The WREB official will determine if a call to 911 is required.
- **AED** – 911 - EMS is immediately notified when the door of the cabinet is opened.
- A report of the emergency will be filed with the Risk Management Department of Rio Salado College.
- Broken Instrument Protocol – A sterile Schwartz Perio Retriever instrument is located in the emergency kit.

## EMERGENCY EQUIPMENT LOCATION

- Oxygen tank and Emergency Drug Kit are located near the WREB chief examiners' desk in the clinic.
- First Aid Kit is located at the front desk and in the infection control room adjacent to the clinic.
- AED – Located in the infection control room.

## EVACUATION PLAN

Evacuation plans are posted throughout the building.

## ADMINISTRATION OF LOCAL ANESTHESIA / PATIENT AVAILABILITY

A practitioner(s) from the school is **NOT** available to administer local anesthesia to candidates' patients. There are **NO** exceptions to this policy.

Rio Salado College does not have additional patients to serve as back-up patients.

## **HOTELS**

Holiday Inn Express, 620 N. 6<sup>th</sup> St., Phoenix, AZ 602-452-2020

Hyatt Regency, 122 N. 2<sup>nd</sup> St., Phoenix, AZ 602-252-1234



## School of Dental Hygiene

### SUPPLIES / EQUIPMENT RENTAL FORM

Name: \_\_\_\_\_

I understand that the equipment I am renting **MUST** be returned at the end of my exam. **A picture ID is required when submitting this form on the day of the exam.** Your ID will be returned to you when you return the equipment to the front desk attendant.

**RENTAL:** I am renting the following equipment:

_____	SPS Sterimate Cavitron 30k Handpiece Sheath	\$30.00ea
_____	Cavitron Inserts (Tips)	\$30.00ea
___	FSI – 10	
___	FSI – 1000	
___	FSI –100	
_____	Instruments	\$10.00ea
___	Dental Mirror	
___	UNC 12 Periodontal Probe	
___	EXD 11/12 Explorer	
___	Aspirating Syringe	
___	Hemostat	
___	Bite Block	

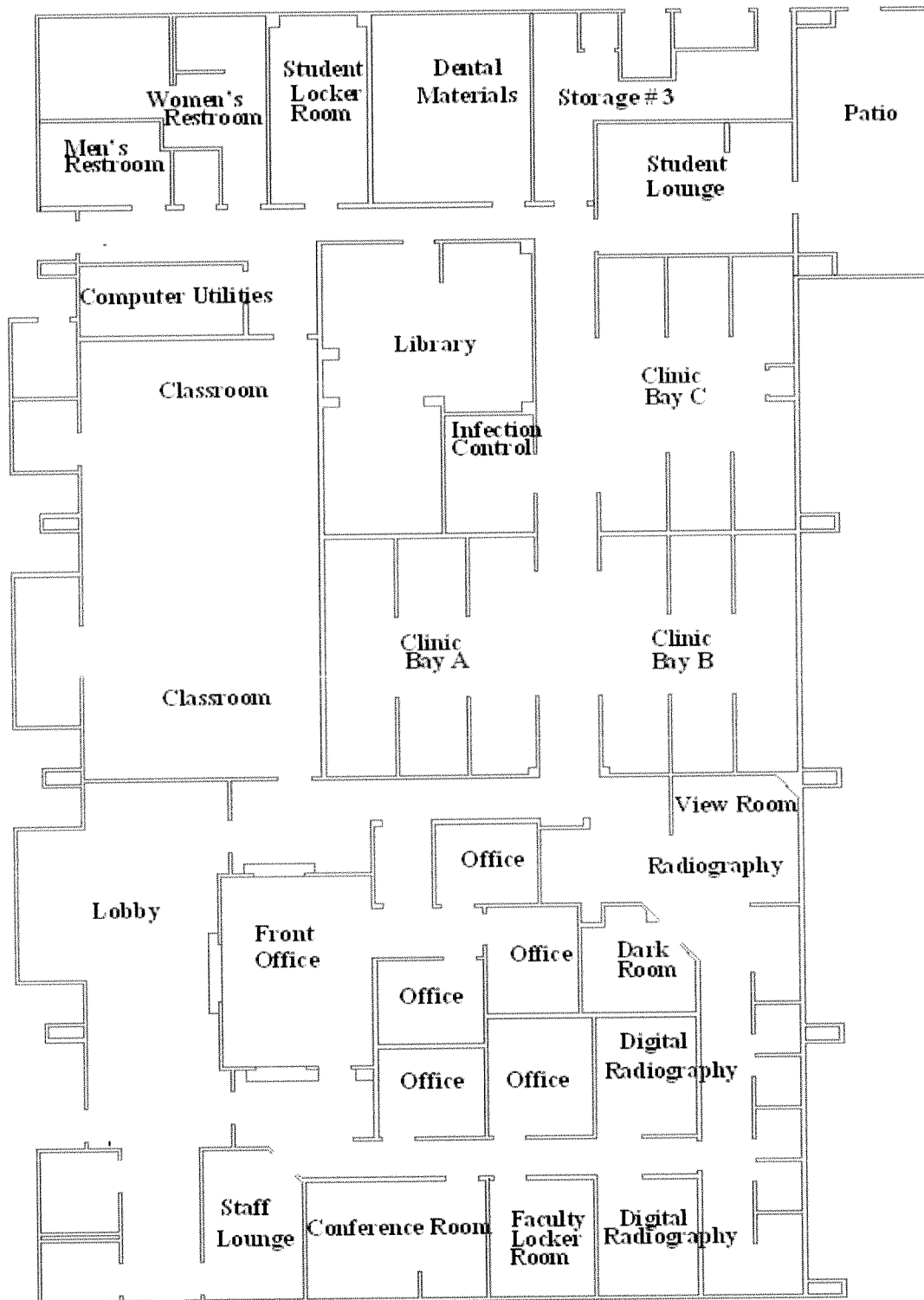
**RADIOGRAPHIC SUPPLIES:** I am purchasing the following supplies:

_____	Digital Radiograph printed page	\$5.00 / page
___	Panelipse	
___	FMS	
___	PA'S	

**TOTAL** \$ \_\_\_\_\_

\_\_\_\_\_  
Signature

\_\_\_\_\_  
Date



# Dental Center

November 7, 2005