

**Welcome to the Portland Community College Dental Clinic  
Located on the Sylvania Campus**

**WREB Examination**

**Anesthesia Exam: Feb 25-26<sup>th</sup> 2012**

**Address:** 12000 SW 49<sup>th</sup> Ave. Portland, OR 97219  
**Building/Room** Health Technology Bldg (HT) Rm 206

**WREB Site Coordinator:** Josette Beach, RDH, MS  
**Phone:** 971 722-4235

**Note to Candidates:** The Portland Community College Dental Department cannot provide patients for candidates. Please do not call the school concerning the obtaining of patients nor ask for school confidential patient records. Recruitment of patients for the exam is entirely up to the candidate.

**Directions:**

**Airport Information:** Portland International Airport (PDX)  
The airport is 15.8 miles from the Sylvania Campus (about 29 minutes).

**Directions from the Airport:**

1. Bear **left** at **NE Airport Way** (go .9 miles)
2. Turn **Rt.** at **NE 82<sup>nd</sup> Ave.** (go 2.1 miles)
3. Turn **Rt.** at **NE Sandy Blvd** (go 2.6 miles)
4. Bear **Rt.** into the **I-84 W** entry ramp (go 2 miles)
5. Take the **1-5 S** ramp to **Salem/Beaverton** (go 6.6 miles)
6. Take **Exit 295** to **Capitol Hwy** (go .2 miles)
7. Turn **Rt** at **Taylor's Ferry Rd**
8. Turn **Rt.** On **Capitol Hwy** (at four way stop)
9. Follow **Capitol Hwy (which becomes 49<sup>th</sup> Ave)** past 5 traffic lights to the **Sylvania Campus on the Rt.**

**Once on Campus:** (This is the front entrance)  
Turn in to campus and **follow the signs to the "Gym/Pool"** (stay to the **Rt.** After the entrance. At the **next street ("J"street)** turn **Lt.** (there will be a sign that says "gym/pool")  
**Follow that street straight** – the HT bldg. is last one on the left. (see map)

**Directions Heading South on I-5:** Follow **steps #6-9** above

**Directions Heading North on I-5:** Take **Exit 293 (Haines St).**  
At stop sign go **right onto Haines**  
Next stop sign go **left onto Lesser Rd.**  
**College entrance will be on the Rt.** (this is the back entrance).

February 2012

**Next stop turn Rt. onto “H” Street.  
HT bldg. is the first bldg on the left (see map)**

Hotels:

|                                                                                  |                                                                                    |
|----------------------------------------------------------------------------------|------------------------------------------------------------------------------------|
| Phoenix Inn Suites<br>14905 SW Bangy Rd<br>Lake Oswego, OR<br>503 624-7400       | Hospitality Inn<br>10155 SW Capitol Hwy<br>Portland, OR<br>503 244-6684            |
| Comfort Suites<br>11340 SW 60 <sup>th</sup> Ave.<br>Portland, OR<br>503 768-4400 | Hilton Garden Inn<br>14850 Kruse Oaks Dr.<br>Lake Oswego, OR 97035<br>503 684-8900 |

Building and Access Hours: Saturday and Sunday 7am to 5:30pm

Parking:

Parking fees are **NOT** required on Saturdays and Sundays. Parking Mondays-Fridays is \$3.00. A parking pass may be obtained from the yellow dispenser located on “J” Street. Do not park at ANY time in disabled parking spaces without appropriate disabled parking permits or in spaces marked as “Staff Parking”

Taxi Cab Companies:

Radio Cab: (503) 227-1212  
Broadway Cab: (503) 227-1234

Messages:

Candidates may have messages left for them by calling 971 722-4235. Location of the message board will be shown to the candidates during the clinic tour. Cell phones **MUST** be turned off during the examinations.

Food Service:

Monday thru Saturday The “Juice it Up Bar” is open in the College Center (CC) Bldg. from 7:30am-2pm. Espresso, breakfast pastries, sandwiches, salads, desserts, ice cream, and fruit are served. (see campus map)  
Sundays: No food service on campus is available.  
Vending machines are located on the first floor of the bldg. Walter Mitty’s restaurant and numerous fast-food restaurants are located within minutes of the campus.

Attractions Near PCC:

|                               |                  |
|-------------------------------|------------------|
| Tigard Cinemas                | 2 miles from PCC |
| Washington Square Mall:       | 3 miles          |
| Downtown Portland             | 7 miles          |
| Oregon Health Sciences Univ.  | 8 miles          |
| Bridgeport Village (shopping) | 2 miles          |

Infection Control:

Candidates must wear appropriate clinic attire and PPE. The school will provide disposable **nitrile** gloves and masks (PCC does not have latex gloves available). Candidates must supply OSHA acceptable safety glasses for themselves and *their patient* and also their own operator lab coat.

Candidates must disinfect the dental operatory with the disinfectant wipes provided. PPE should be worn during disinfection procedures. All touch surfaces on the dental unit must have barriers placed. Non-critical areas do not need to be covered with barriers, but must be disinfected with the supplied wipes following examination.

Antibacterial soap is available at sinks and waterless alcohol based hand cleaner is located at each dental unit.

Non “bloody” items may be disposed of in the general garbage. Items that are soiled with blood will be disposed of in a red biohazard bag at the dental unit. Following the examination, dispose of the bag at the sterilizing window.

Sharps are to be disposed of properly in the sharps containers located at **each sink**.

Sterilization of anesthetic syringes/instruments for *immediate* re-use, is available for the candidate following examination. Items may be placed in a sterilizing pouch and **labeled with the appropriate candidate ID #**. A tray will be available for the student to deposit the wrapped syringe/instrument for sterilization.

Tours:

A tour of the facility will be held the day of the candidate orientation only. We are unable to provide tours prior to the day of the candidate orientation.

Medical Emergencies: The following protocol must be followed upon discovering a serious medical emergency:

- a. The candidate must stay with the patient.
- b. Inform an assistant or responsible person to alert the floor examiner of the emergency.
- c. The floor examiner will determine if emergency personnel should be contacted (Note location of emergency equipment on the clinic floor plan map.)
- d. Contact emergency personnel by dialing x4444. Follow the directions next to the phone for stating nature of the emergency and location.

- e. Emergency personnel assess the patient/situation and contact 911 if needed. If campus emergency personnel cannot be reached, the floor examiner should determine if the EMS system should be activated. Do this by dialing 9-911. Follow the directions located next to the phone for stating nature of emergency and location.
- f. Documentation should be left with the Site Coordinator detailing the nature of the emergency, procedures followed, care given, and referral or patient instructions given. The candidate is responsible for having the floor examiner approve the documentation and for providing it to the Site Coordinator.

Items supplied by Portland Community College:

|                                                |                                   |
|------------------------------------------------|-----------------------------------|
| Air/Water Syringe Tips (metal)                 | Dental Anesthetic*                |
| Bags, Biohazard                                | Bags, Sterilization               |
| Bags, Trash                                    | Barrier Chair cover and all- wrap |
| Cotton applicators                             | Disinfectant wipes                |
| Drinking cups                                  | Facial tissue                     |
| Gloves, <b>nitrile only</b>                    | Masks                             |
| Hand soap/hand rub                             | Mouthwash                         |
| Paper Towels                                   | Patient Napkins                   |
| Saliva ejector                                 | Disposable instrument trays       |
| Gauze sponges                                  | Autoclave tape                    |
| Certol Protector cardboard needle sheath props | Needles**                         |

\*Dental Anesthetic provided by the clinic includes: Scandonest 3% plain, Lidocaine 2% 1:100,000, 4% Citanest Forte 1:200,000 and 4% Citanest Plain.

\*\* Needles provided by the clinic includes: Monoject plastic hub Self-Threading, 25G short and long, Monoject 27G short and long, Septodont Septoject 30G short.

**SUPPLIES NOT LISTED ABOVE MUST BE PROVIDED BY EACH CANDIDATE.**

See Enclosures:

Map of Campus

Health Technology Floor Plan 1<sup>st</sup> and 2<sup>nd</sup> Floor

Floor Plan of Dental Clinic

**Please Note:** The anesthesia orientation will take place in HT 223 and, if needed, HT 123. The practical portion of the examination/s will take place in the dental clinic HT 206.

If after reading this information you have any further questions about the facilities or supplies, please call Josette Beach at 971 722-4235 or email [jbeach@pcc.edu](mailto:jbeach@pcc.edu). Questions relating to the examination/s must be directed to WREB.

AM Automotive & Metals  
 BK Bookstore  
 CC Arma DeBernardis College Center  
 CT Communication Technology  
 HP Heat Plant  
 HT Health Technology  
 LIB Library  
 PAC Performing Arts Center

SCB South Classroom Building  
 SS Social Science & Technology  
 ST Science & Technology  
 TCB Technology Classroom Building  
 Safe Assembly Area

Parking Permit Stations  
 Disabled Parking  
 30 Minute Visitor Parking  
 Purchase One Day Parking Permit  
 Wireless Hotspot  
 Next Generation Wireless  
 Provides faster speeds and better reliability.

All campus locations are Tobacco Free.



Find businesses, addresses and places of interest. [Learn more](#)

[Get Directions](#) [My Maps](#)

[Print](#) [Send](#) [Link](#)



### PCC Sylvania Campus

12000 SW 49th Ave  
Portland, OR 97219

[Directions](#) [Search nearby](#) [Save to...](#) [more](#)

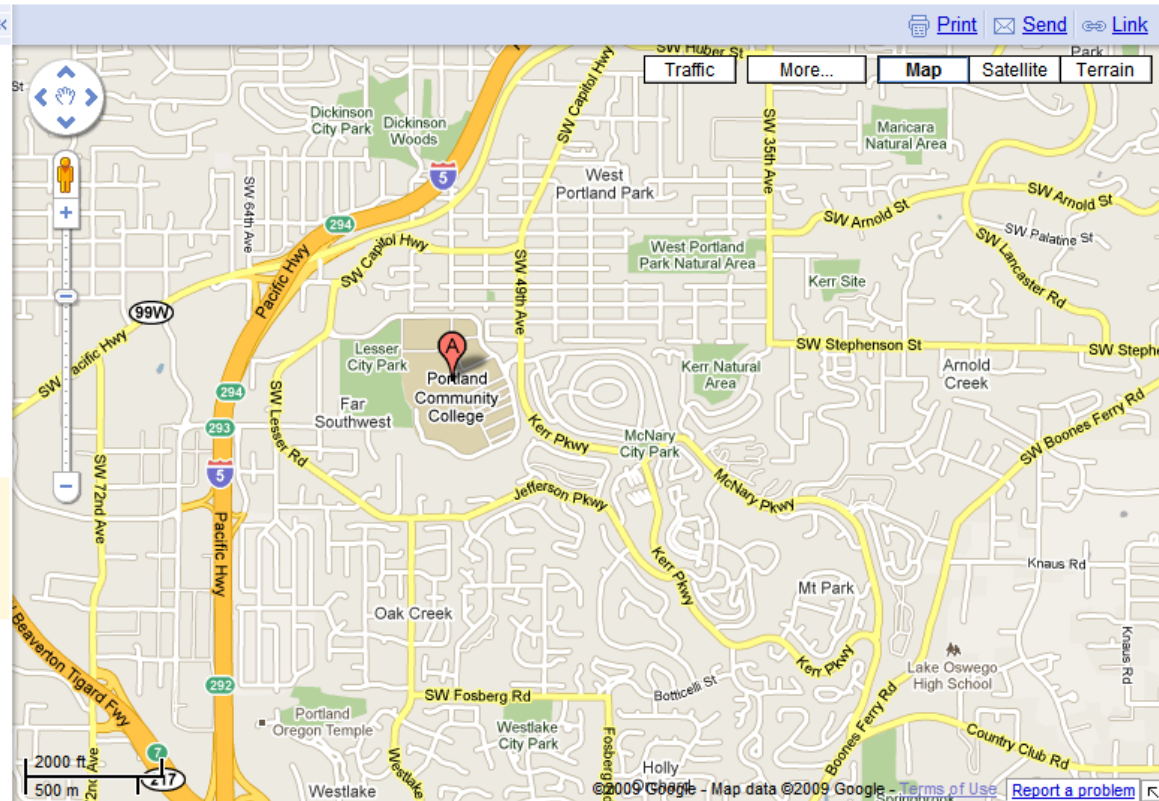
Selected businesses at this address:

- [Bank of America Atm](#)
- [Portland Community Clg Library](#)
- [Portland Community College \(PCC\): Sylvania Campus](#)
- [Performing Arts Center](#)
- [Portland Community College: Main Switchboard](#)
- [All businesses at this address](#)

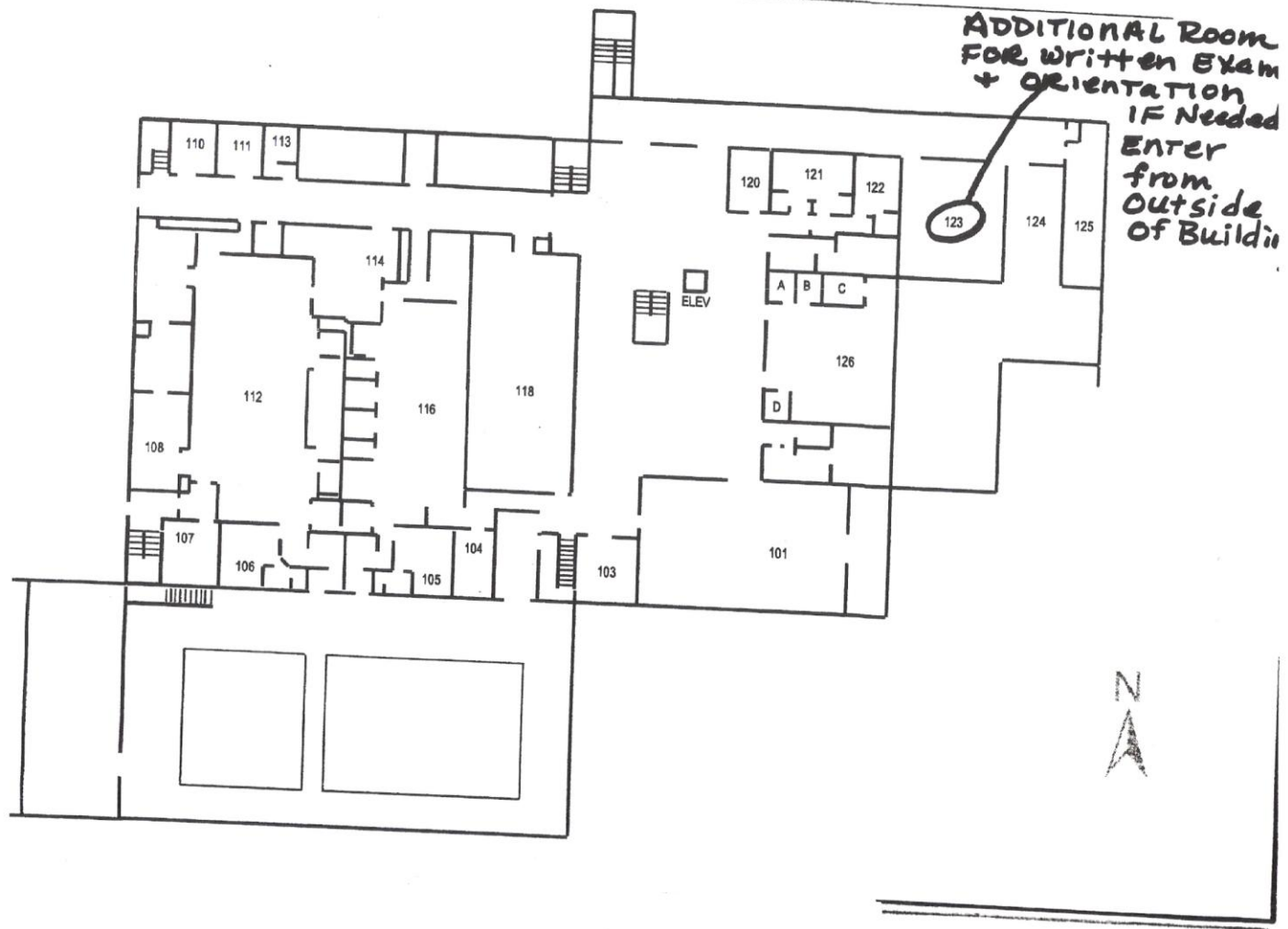
Sponsored Links

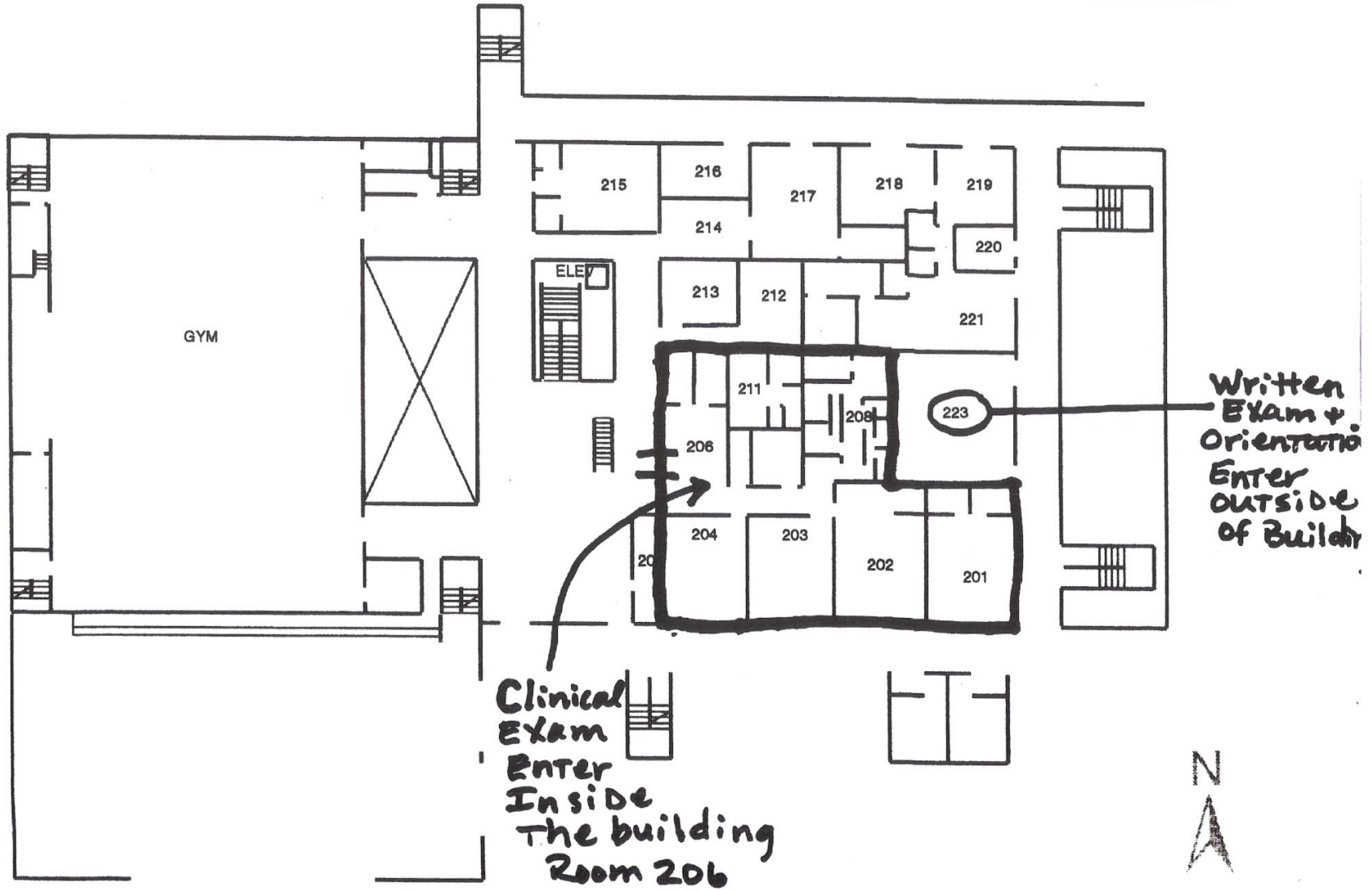
#### Libraries

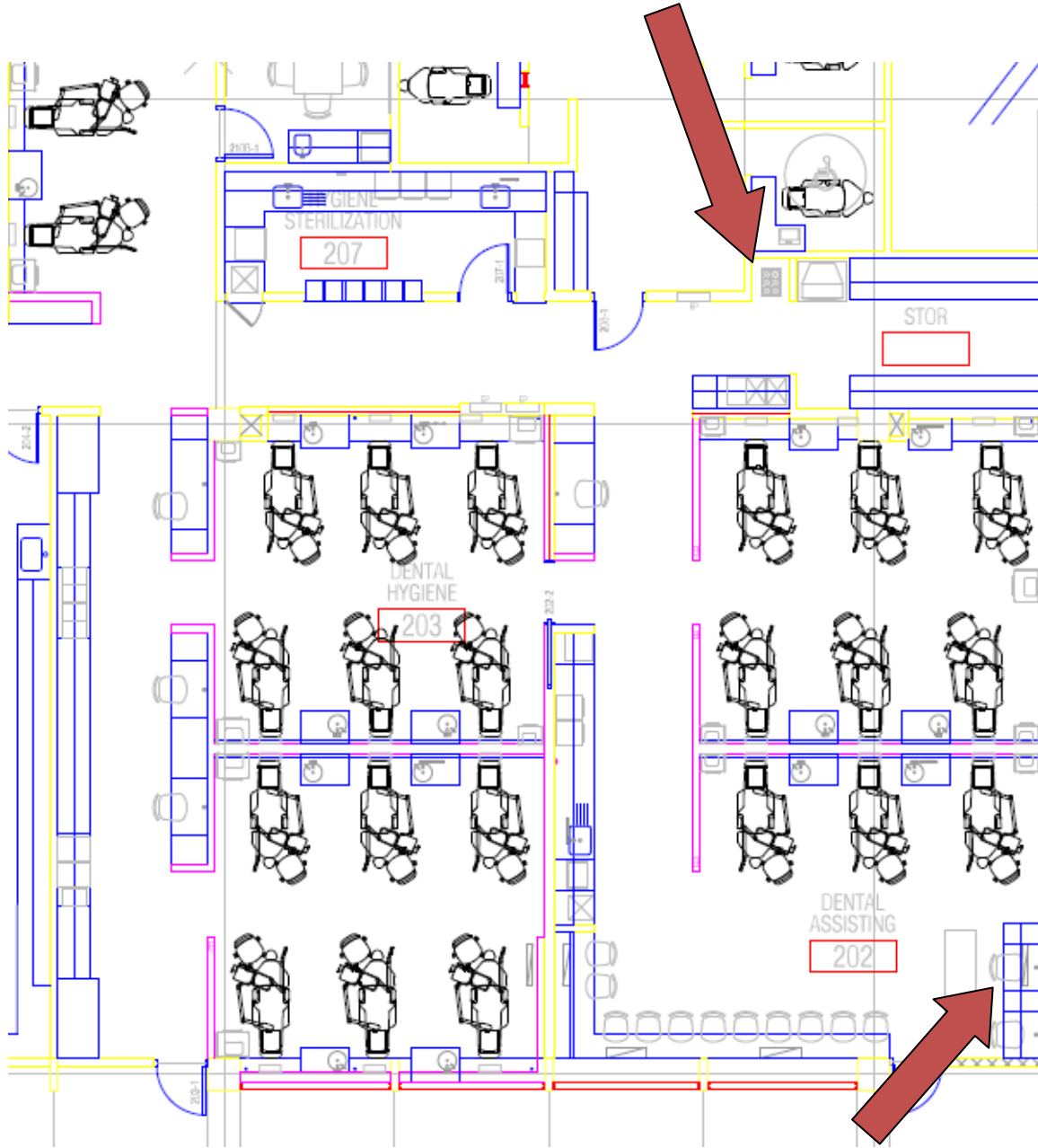
Find Listings for Local Public  
**Libraries at YellowPages.com** ©  
[Libraries.YellowPages.com](#)



# HT







**Medical Emergency Kit**

February 2012