

Idaho State University
Site Information for WREB Examination
June 23-26, 2010

School Coordinator: Linda Sward
(208) 282-3282
swarlind@isu.edu

Candidate Information

- The school will be open each day at 7:30 a.m.
- All orientations and written exams will be held at the ISU Dental Hygiene Sciences Building (#32 on map). All clinical exams will be held in the ISU Dental Hygiene Clinic (#37 on the map).
- Clinic tours will be provided after each orientation.
- There are 15 operatories on the west wing of the clinic available to the candidates.
- There are 18 operatories on the east wing of the clinic available to the examiners.
- All operatories are ambidextrous.
- Call Linda Sward, Site Coordinator (208) 282-3282 or email (swarlind@isu.edu) with questions.

Clinic Availability for Patient Screening

The Dental Hygiene Clinic will be open Monday, June 21st and Tuesday, June 22nd from 8:00-11:30 and 1:00-3:00. Candidates may screen patients on those days during the specified times. Please contact Linda Sward (208) 282-3282 if you have any questions or concerns.

Radiographic Information

The Dental Hygiene Clinic will be open Monday, June 21st & Tuesday, June 22nd from 8:00-11:30 and 1:00-3:00 for candidates to expose and develop radiographs on their patients. Candidates need to provide their own film, holders, and mounts.

Procurement of Patients

Procurement of patients is the responsibility of the candidate. The ISU Department of Dental Hygiene does not provide patients for candidates.

Equipment Type and Clinic Operatory Information

There are 15 units available for candidate use. All units are equipped with high and slow speed handpiece use. Candidates must provide their own handpieces. Handpiece hook-ups are 4-hole pattern. Time will be allotted for all candidates to operate chairs, hookup handpieces, sonic units, and ultrasonic units during each clinic tour. Candidates are encouraged to ask questions and/or concerns about the WREB examination or the facility at that time.

Ultrasonic, Piezoelectric, and Sonic Devices

Ultrasonic, piezoelectric, and sonic devices are not available for use or rent. Candidates must bring their own ultrasonic and sonic tips. Each operatory has a quick disconnect water hookup and electrical outlet. There are no hookups for air polishing devices. If you have another device, please contact the ISU Dental Hygiene Department at (208) 282-3282 to determine if it is compatible with these hookups. Candidates are expected to provide their own instruments, and alligator clips. Disposable trays, evacuation tips, and air/water syringe tips will be provided to candidates as needed.

Sterilization of Instruments

Candidates should arrive with all items previously sterilized. After each clinical exam, instruments for sterilization should be taken to the “non-sterile” blue bin located in the reception area on the counter. Candidates should ensure that all instruments are properly wrapped and labeled prior to sterilization. Sterilized instruments may be picked up at the “sterile” blue bin, also located in the reception area. *Idaho State University is not responsible for lost or stolen instruments.*

Unit Set-up

A demonstration will be given during each clinic tour.

- 1) Obtain protective barrier materials from the central supply area.
- 2) Surface disinfect all areas, which may be touched during patient treatment. Bottles of spray disinfectant and over gloves are provided in each unit.
Spray bracket table and tray, tri-syringe handle, saliva ejector, high speed suction, dental chair and chair controls, mobile cabinet, top and drawer pulls, sink, sink handles and counter top. Spray the disinfectant on a paper towel and wipe light and light handles.
- 3) Cover each of the following with protective barriers: bracket table and tray (plastic bag), light switch and handles (plastic wrap), tri-syringe handle (plastic bag and secure with tie), saliva ejector adapter (plastic bag and secure with tie), high speed suction adapters (if used with plastic bags), dental chair, headrest and control (plastic bag).
- 4) Run water through tri-syringe for 3-5 minutes.

Over-gloves are available for the following:

- Obtaining an additional equipment
- Going to the supply cart
- Going into a contaminated area

Depending on the reason for leaving the operatory, the candidate may place over gloves over examination gloves or remove examination gloves, wash hands and put on a pair of over gloves.

Hazardous Waste Disposal

Blood saturated items are placed in the red biohazard waste receptacle located at the end of the clinic wing.

After Patient Treatment

- 1) After patient treatment, uncontaminated waste is placed in the white waste receptacle at the end of the clinic wing.
- 2) Put on overgloves and spray all surfaces with the same disinfectant that was used during the initial preparation. Wipe sprayed surfaces dry after 10 minutes.
- 3) Flush water and evacuation lines for 1 minute.

Emergency Protocol

There are three clearly marked emergency exits (see map). Emergency equipment and portable oxygen tanks are located on each wing of the Dental Hygiene Clinic. An AED is located in the front entryway.

Emergency protocol and location of equipment will be shown and discussed during the clinic tour.

If you have any questions, do not hesitate to ask.

Reference numbers for medical needs are as follows:

Pocatello Ambulance, Fire, and Police	911
Portneuf Medical Center	(8) 239-1000
Campus Security	2515

Administration of Local Anesthesia

Idaho State University does not provide practitioners to administer anesthesia for any candidate taking the exam.

Parking

Parking is available in the parking lot across the street from the school. An information booth located on 8th Street can provide parking passes for the above areas during weekday hours. This booth is located at G5 on the enclosed map. Passes are not needed after regular business hours and on weekends.

Supplies

All supplies are latex free products. Expendable materials supplied in the candidate and examiner areas are as listed:

2x2 Cotton squares
Amalgamators
Antimicrobial mouth rinse
Autoclave bags
Barrier protection material
Bracket tray covers
Clear Lemon - surface disinfectant
Cotton swabs
Curing lights
Disposable air/water syringe tips
Disposable saliva ejectors
Disposable trays
Drinking cups
Facemasks
Facial tissues
Gloves (small, medium, & large)
Headrest covers
Over gloves
Paper towels
Patient bibs
Pro-Ez (instrument cleaning solution)
Prophy paste
Rod post
Scrap containers
Soap
Topical anesthetic
Trash bags

X-ray Area

Sanitizing materials
X-ray developing solution
Automatic processor

Current Maps of School/ Directions

Please refer to the enclosed map.

Lodging Accommodations

Thunderbird Motel

1415 S 5th Ave
(208) 232-6330, 1-800-978-2475
(Across from campus)

Econolodge University

835 S. 5th Ave.
(208) 233-0451
(Across from campus)

Best Western Cottontree Inn

1415 Bench Rd.
1-800-528-1234
(5-10 min. drive from ISU)

Ameritel Inn
1440 Bench Rd.
(5-10 min. drive from ISU)

Red Lion Hotel
1555 Pocatello Creek Rd.
(5-10 min. drive from ISU)

Super 8 Motel
1399 Pocatello Creek Rd.
1-800-200-8944
(5-10 min. drive from ISU)

Hampton Inn And Suites
151 Vista Drive
(208) 233-8200
(5 min. drive from ISU)

Food Facilities

Rendezvous Building (on campus – next to the Dental Hygiene Clinic)

Elmer's Pancake & Steak House
(5th Ave., across from campus)

Goody's Deli
(5th Ave., across from campus)

Pizza Hut
(5th Ave., across from campus)

Subway Sandwiches & TCBY
(5th Ave., across from campus)

Jimmy Johns Gourmet Sandwich Shop (5th Ave., across from campus)

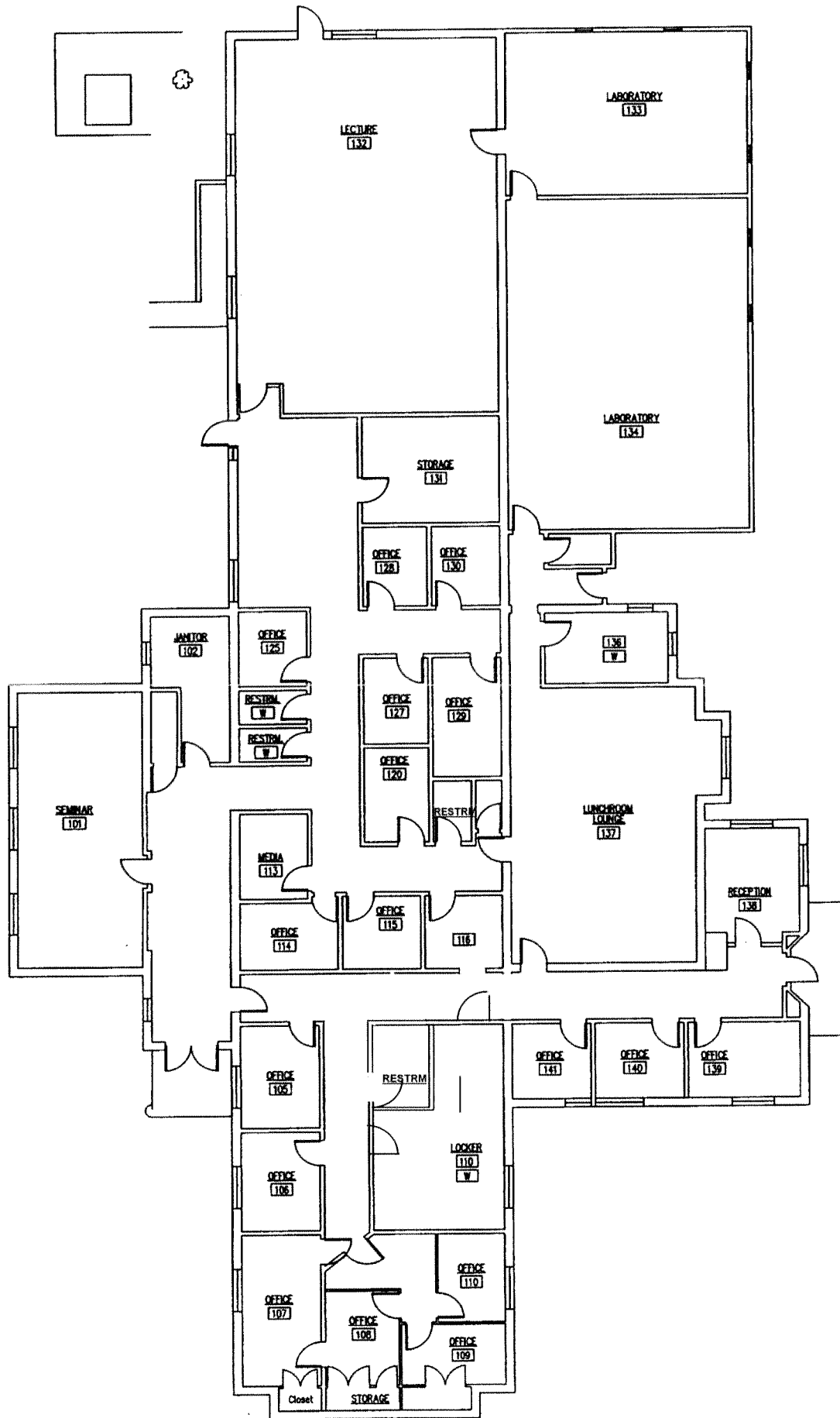
Buddy's
(Lewis, between 5th & 6th Ave. Italian food)

Taco Bell
(5th Ave., across from campus)

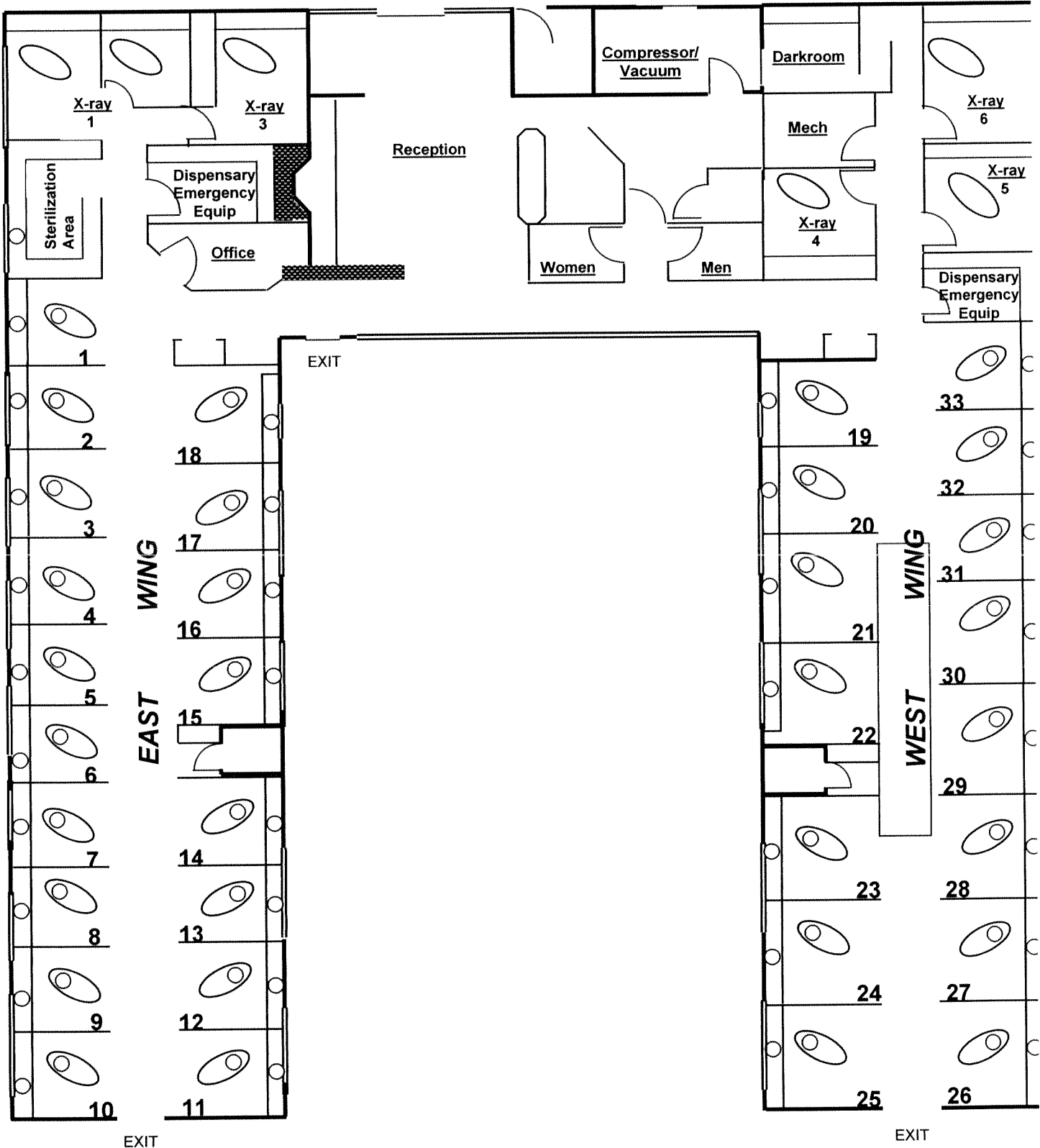
Oliver's
(5th Ave., and Lewis, Diner)

Quizno's
5th Ave.

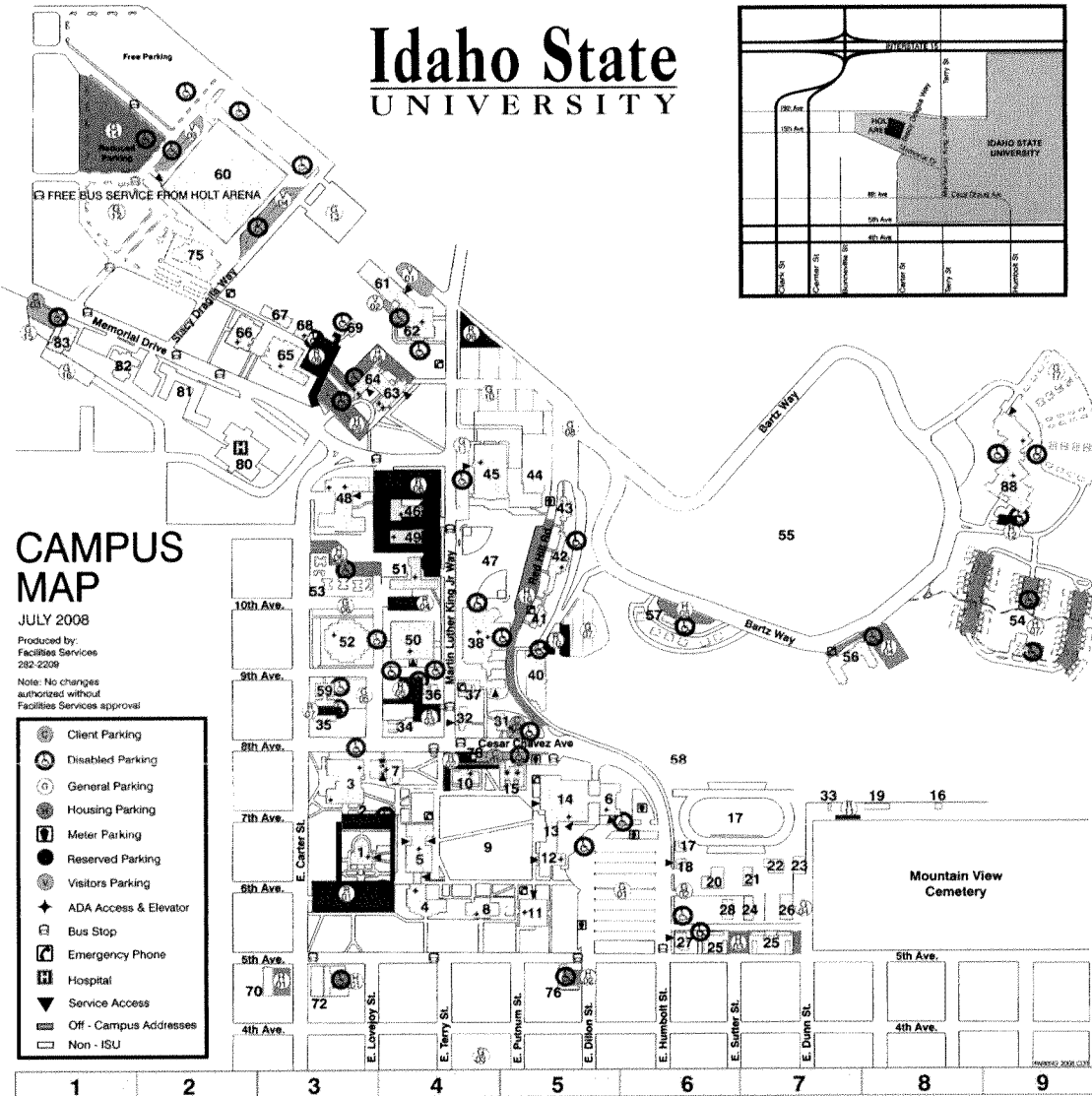
5th Street Bagelry
(5th Ave., across from campus)



DENTAL HYGIENE CLINIC BUILDING #37



Idaho State UNIVERSITY



CAMPUS MAP

JULY 2008

Produced by:
Facilities Services
282-2209

Note: No changes authorized without Facilities Services approval

- Client Parking
- Disabled Parking
- General Parking
- Housing Parking
- Meter Parking
- Reserved Parking
- Visitors Parking
- ADA Access & Elevator
- Bus Stop
- Emergency Phone
- Hospital
- Service Access
- Off-Campus Addresses
- Non-ISU

- 10 ADMINISTRATION (ADMIN)
- 61 ALBION HALL (HEVTE)
- 29 ALUMNI HOUSE - MAGNUSON
- 28 ART / MUSEUM STORAGE (MSTOR)
- 74 AVIATION MECH (AIR).....POCCATELLO /
- 56 BARTZ FIELD (BARTZ)
- 65 BIOLOGY - GALE LIFE SCIENCE (LS)
- 58 BUSCO PARK
- 05 BUSINESS ADMINISTRATION (BA)
- 86 BUSINESS / TECH. CENTER.....1651 ALV
- 47 CADET FIELD (CADET)
- 56 CHILD CARE - EARLY LEARNING CENTER / /
- 49 COLLEGE OF TECHNOLOGY (RFC)
- 35 COLONIAL HALL (COL)
- 84 CONTINUING EDUCATION - ISU (CONED)
- 59 CREDIT UNION - ISU FEDERAL
- 17 DAVIS FIELD HOUSE
- 37 DENTAL HYGIENE CLINIC (CLIN)
- 32 DENTAL HYGIENE SCIENCES (DA)
- 71 DIESEL ELECTRIC - DOWLING (DB)
- 73 DIESEL MECHANICS - ARMORY (ARM)
- 62 EDUCATION (ED)
- 07 ENGINEERING - LULLIBRIDGE (LEL)
- 79 ENGINEERING RESEARCH COMPLEX
- 83 FAMILY MEDICINE / DENTAL SCIENCES (FM)
- 11 FINE ARTS (FA)
- 01 FRAZIER HALL (FRAZ)
- 33 FUEL STATION - ISU
- 63 GARRISON HALL (GARR)
- 15 GRAVELEY HALL (GRAV)
- 18 GROUNDS SHOP
- 16 HAZARDOUS WASTE
- 20 HEAT PLANT
- 60 HOLT ARENA (HOLT)
- 80 HOSPITAL - PORTNEUF REGIONAL MED. CTI
- 82 HUMAN DEVELOPMENT CENTER (HDC)
- 13 HYPOSTYLE
- 49 INDUSTRIAL CRAFTS (IC)
- 78 INFORMATION BOOTH
- 77 LAW ENFORCEMENT (LAW)
- 52 LDS INSTITUTE OF RELIGION (INST)
- 67 LECTURE CENTER (LC)
- 04 LIBERAL ARTS - KEDEL (LA)
- 50 LIBRARY - ELI M. OSBOLER (LIBR)
- 87 LINEAR ACCELERATOR.....1500 ALV
- 89 LINEAR ACCELERATOR (RESEARCH TECH. RESEARCH & DEV)
- 18 M & O - FACILITIES SERVICES
- 24 MAINTENANCE SHOPS
- 12 MUSEUM - IDAHO MUSEUM OF NATL HISTO
- 66 NURSING - BECKLEY (NURS)
- 81 NURSING HOME - PORTNEUF LONG TERM
- 88 PERFORMING ARTS CENTER - STEPHENS
- 08 PHARMACY - LEONARD HALL (LH)
- 03 PHYSICAL SCIENCE / COMPLEX (PSI/PSC)
- 69 PLANT SCIENCE (PLSC)
- 30 PRESIDENT'S RESIDENCE - SERVEL HOUSE
- 27 PUBLIC SAFETY
- 09 QUADRANGLE - HUTCHINSON MEMORIAL
- 44 RECREATION FACILITY (REC)
- 40 RED HILL (REDHL)
- 45 REED GYMNASIUM (GYM)
- 38 RENDEZVOUS (REND)
- 26 SHIPPING & RECEIVING
- 22 SHOPS
- 68 SPEECH PATHOLOGY / AUDIOLOGY (SPA)
- 75 SPORTS & ORTHOPEDIC CENTER (SPMED)
- 34 ST. JOHN'S CENTER (ST. JOHN)
- 91 STUDENT HEALTH CENTER
- 14 STUDENT UNION & BOOKSTORE (PSUB)
- 02 SWANSON ARCH
- 51 TRADE & TECHNOLOGY (T&T)
- 21 TRANSPORTATION SERVICES SHOP
- 36 UNIVERSITY BIBLE CHURCH (UBC)
- 23 UNIVERSITY STORES - WAREHOUSE #2
- 46 VOCATIONAL ARTS (VOART)
- HOUSING
- 70 5th STREET.....Apt.
- 76 GRADUATE HOUSING.....Apt.
- 57 McINTOSH MANOR.....Apt.
- 42 OWEN-REDFIELD COMPLEX (OWEN).....Dorm
- 43 DYER HALL.....Dorm
- 41 NICHOLS HALL.....Dorm
- 53 PULLING COURTS.....Apt.
- 38 RENDEZVOUS (REND).....Apt.
- 54 RIDGE CREST.....Apt.
- 56 SCHUBERT HEIGHTS.....Apt.
- 64 TURNER HOUSE (TURN).....Dorm
- 25 UNIVERSITY COURTS.....Apt.
- 72 WEST CAMPUS.....Apt.