

Apollo College  
Dental Hygiene

Checklist for Dental Hygiene and Anesthetic Board

1.
  - A. Patient Screening-there will be no facility available for screening for out of town candidates prior to WREB, this is due to liability and licensing laws.
  - B. The hookup is a standard 4 hole connect. There are no handpieces or phophy angles for rent from the school.
  - C. All of our chairs are equipped for hookup to ultrasonic devices. We have the quick disconnect for water and 110 volt electrical outlet with standard hookup. There is a local supply company who will rent ultrasonic units, to contact them call Ron Shoen 208-866-5360.
  - D. We use disposable air/water syringe tips and they are provided under the school use fee.
  - E. Yes the candidates will have access to a digital x-ray machine. No conventional x-rays are available. The candidate will need to supply their own photographic paper for copies.
  - F. We have a sterilization person one hour before scheduled start time and hour after the scheduled end time.
  - G. Disposable barriers available, Dis-cide and Lysol for counter tops, sharps containers available on counter tops. Sterilization room and personnel available for instruments.
  - H. Oxygen and medical emergency kit located on the clinic floor. Emergency equipment area is marked on the map. Procedure for contacting emergency medical personnel is on the wall near the emergency equipment.
  - I. Parking is free and available around and on the campus.
  - J. A map of building is attached.  
Directions from the airport-take I-84 west bound, go 2 miles and take exit I-184 (downtown exit), traveling on I-184 go 1.5 miles and take Curtis exit, at stoplight(which is Curtis) turn left, go to second traffic light (which is Fairview) turn left, go .5 mile to next traffic light and turn left (this is Liberty St.), go two blocks and the campus is on the left.

Directions for I-84 east bound, take exit I-184 (downtown exit), traveling on I-184 go 2 miles and take Curtis exit, at stoplight(which is Curtis) turn left, go to second traffic light(which is Fairview) turn left, go .5 miles to next traffic light and turn left(this is Liberty St.), go two blocks and the campus is on the left.

Directions for I-84 west bound, take exit I-184(downtown exit), traveling on I-184 go 1.5 miles and take the Curtis exit, at stoplight(which is Curtis) turn left, go to second traffic light(which is Fairview) turn left, go .5 miles to next traffic light and turn left(this is Liberty St.), go two blocks and the campus is on the left.

K.	Hotels-	Ameri-Tel	7499 West Overland	Boise	208-323-2500
		Red Lion Hotel	1800 Fairview Ave.		208-344-7691
		Holiday Inn	3300 S. Vista Ave.		208-344-8365
		Best Western	2645 Airport Way		208-384-5000

L. Security is available and easily accessed at all times during the WREB.

2. We have 30 chairs in the main floor marked Room 140, there are no other chairs available in any other rooms. We have five left handed chairs, marked on the map.
3. Anesthesia Examiner Workshop Room-Room 132  
Anesthesia Written Exam Room-Room 141 and 143 (one large room)  
Candidate Orientation Room-Room 145
4. A practitioner will be available everyday throughout the exam for a fee to administer anesthesia to candidates' patients.

Anesthesia Only Exam  
School Checklist

1. A. A map of building is attached.

Directions from the airport-take I-84 west bound, go 2 miles and take exit I-184 (downtown exit), traveling on I-184 go 1.5 miles and take Curtis exit, at stoplight (which is Curtis) turn left, go to second traffic light (which is Fairview) turn left, go .5 mile to next traffic light and turn left (this is Liberty St.), go two blocks and the campus is on the left.

Directions for I-84 east bound, take exit I-184 (downtown exit), traveling on I-184 go 2 miles and take Curtis exit, at stoplight (which is Curtis) turn left, go to second traffic light (which is Fairview) turn left, go .5 miles to next traffic light and turn left (this is Liberty St.), go two blocks and the campus is on the left.

Directions for I-84 west bound, take exit I-184 (downtown exit), traveling on I-184 go 1.5 miles and take the Curtis exit, at stoplight (which is Curtis) turn left, go to second traffic light (which is Fairview) turn left, go .5 miles to next traffic light and turn left (this is Liberty St.), go two blocks and the campus is on the left.

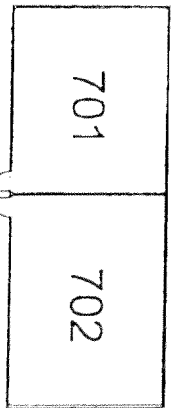
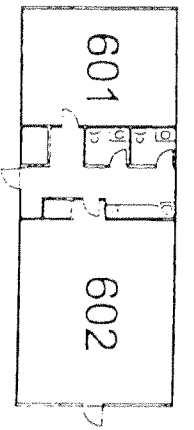
- B. Parking is free and available for all candidate, patients and examiners.

- C. Disposable barriers available, Dis-Cide and Lysol for counter tops, sharps containers available on counter tops. Sterilization room and personnel available for instruments.

D.. Hotels	Ameri-Tel	7499 West Overland	Boise	208-323-2500
	Red Lion Hotel	1800 Fairview Ave.		208-344-7691
	Holiday Inn	3300 S. Vista Ave.		208-344-8365
	Best Western	2645 Airport Way		208-383-5000

- E. All mandatory supplies are supplied for all candidates. The school will provide local anesthetic (2% Lidocaine 1:100,000 epi, 3% Mepivaine plain) and topical anesthetic.

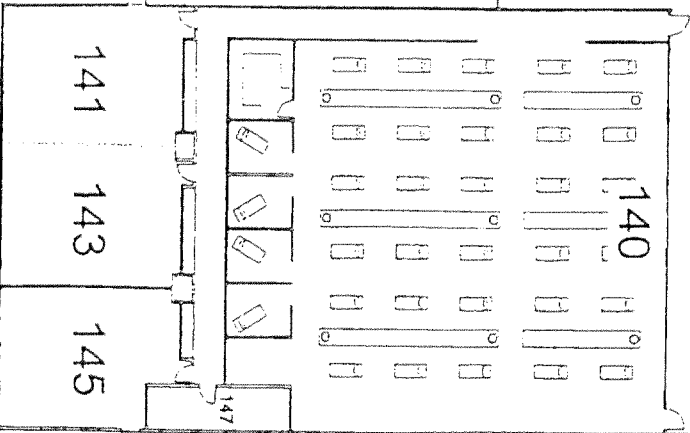
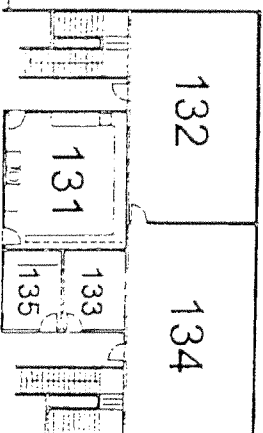
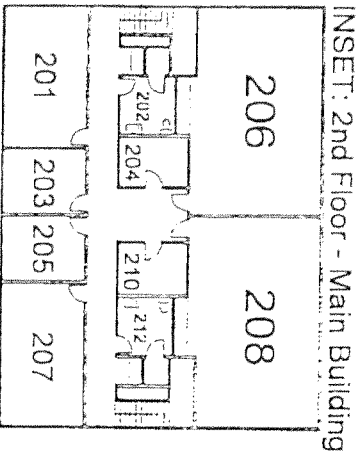
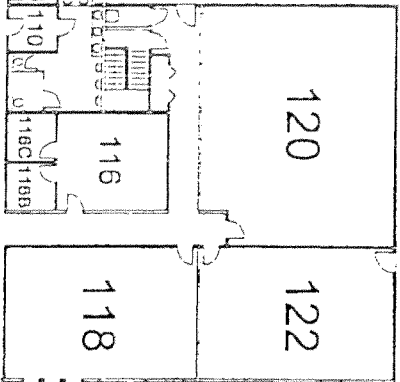
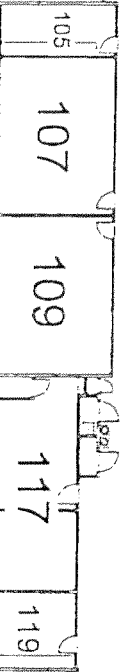
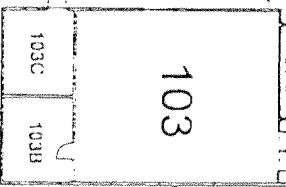
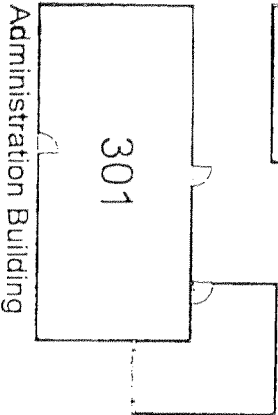
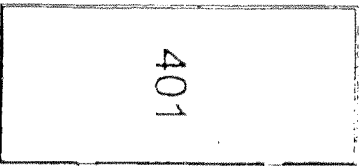
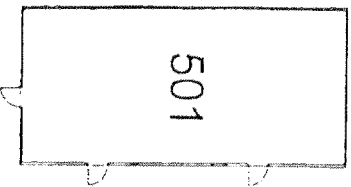
2. We have no equipment from the school available to rent. There is a local supply company who may rent equipment. Call Ron Shoen 208-866-5360.
3. Oxygen and medical emergency kit located on the clinic floor. Emergency equipment is marked on map. Procedure for contacting emergency medical personnel is on the wall near the emergency equipment.
4. Security is available and easily accessed at all times during the WREB.
5. Anesthesia Examiner Workshop Room-Room 132  
Anesthesia Written Exam Room-Room 141 and 143 (one large room)  
Anesthesia Orientation Room-Room 145



# APOLLO COLLEGE

## Campus Map

1200 North Liberty Street  
 Boise, Idaho 83704  
 (208) 377-8080



N. Liberty Street