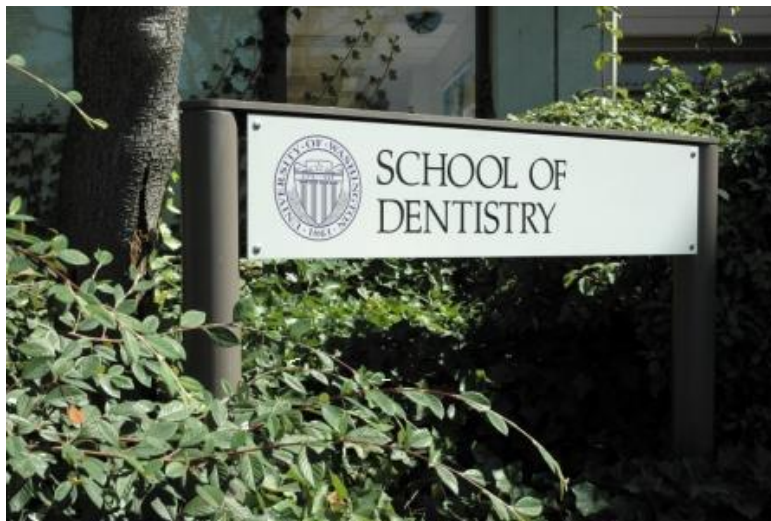




School Information for WREB Candidates

Western Regional Board Examination

June 13-16 2012



<http://mydental.uw.edu/>

Welcome to the University of Washington School of Dentistry. The following serves as general background information regarding facilities and services available for the WREB examination hosted at the University Of Washington School Of Dentistry.

Exam Location

The School of Dentistry is located south of the main campus, in the Warren G. Magnuson Health Sciences Center, 1959 NE Pacific Street, Seattle, WA 98195 (Appendix D, E, and F).

- WREB Candidate Orientation location (Appendix B)
- The clinical exam will be held in the D wing of the Health Sciences Building (Appendix B & C)
- Endo Exam (Appendix A)
- Husky Room (Conference room with food/refreshments for candidates, patients and staff (Appendix C)

Parking:

Exam Candidates, Assistants, and Patients should park in Visitor Parking – Lot S-1. See enclosed map. The fee is \$15.00 Monday – Friday, \$6.00 on Saturday, and complimentary on Sunday and Monday parking attendants will be available beginning at 6:30am Saturday morning. If you park prior to 6:30am, you may receive a parking violation. Parking is also available in our triangle parking center. (Appendix D) for updated parking information, visit the parking services web site: <http://www.uwcommute.com> or the parking services audio library at 206-685-1543.

- *Patients traveling to the University for the exam should be provided maps of the school and parking facilities (Appendix D, E, F)*

Transportation:

Metro and Community Transit (originating outside of King County) offer bus routes to the University of Washington Campus. For route information the following information may be useful:

- *Metro Transit:* Mon- Fri 5am to 10pm 206-553-3000
 - Call for trip planning, routes, schedules, fare and pass information
 - <http://metro.kingcounty.gov/>
- *Sound Transit:* (Train runs from Seattle International Airport to downtown Seattle) For trips origination south and east of Seattle 206-398-5000/ 1-800-201-4900
 - [http:// soundtransit.org/](http://soundtransit.org/)
- *Community Transit:* For trips originating in Snohomish County 425-353-7433
 - <http://www.commtrans.org/>
- *Airport Transportation:*
 - Shuttle Express 1-800-487-RIDE/ 206-622-1424
 - www.shuttleexpress.com
- *Taxis:*
 - Taxi stations are located on NE Pacific Street at the main entrance to the University of Washington Medical center. Frequently used Taxi services are as follows:
 - Farwest 206-622-1717
 - Checker 206-622-4949
 - Pioneer 206-622-8383
 - Yellow 206-622-6500

Lodging:

See page 10 for a list of hotels and motels in the University vicinity.

Facilities

Smoking is STRICTLY PROHIBITED throughout the entire University of Washington Health Sciences Center.

Telephones:

- Telephones are located in the Dental Clinics.
- Dial 9 to access an outside line

Emergency Telephone Numbers

- 206-330-6478 Dental Clinic Operations Manager
- 206-543-5292 Sterilization
- 206-351-2268 School of Dentistry Exposure and Incident Hotline (8am to 5pm)

Restrooms:

- Are located throughout the Health Sciences Facilities- Handicap accessible restrooms are available on the 1st floor D wing.

Lost and Found:

- During the examination, the Sterilization Room (D338) will serve as the lost and found area

<p>THE UNIVERSITY OF WASHINGTON ASSUMES NO RESPONSIBILITY FOR DENTAL INSTRUMENTS OR PERSONAL EFFECTS THAT ARE LOST OR STOLEN FROM THE DENTAL CLINICS OR LABORATORIES</p>

Clinic Facilities

Instruments and Equipment:

Candidates MUST provide their own instruments and equipment. The School of Dentistry does not have equipment, hand pieces, adapters, carts or lockers for loan or rent

- Assistant and operator chairs and work surfaces will be provided in the operatory.

The School of Dentistry recognizes WREB testing can be stressful and result in students forgetting items such as cassettes. Rental agreements (Appendix G) will be completed at time of rental and requires the items to be inspected by the individuals renting equipment.

- Candidates can check out cassettes from sterilization/operations manager for \$150.00 non-refundable rental fee and a damage deposit of \$500.00, refunded upon verification instruments have been returned.
- Equipment available for rental includes Restorative, Periodontic and Exam cassettes (\$25.00 rental fee).
- Digital Phosphorous Plates X-ray Cassette (\$15.00) consisting of (2) #1 Plates, (6) #2 plates

The School of Dentistry utilizes Star 430 SWL and Star 6 Pin Swivel. Any brand of 6 pin swivel/hand piece should work in our clinics and lab. *The School of Dentistry does not rent or loan hand pieces or swivels to ANYONE.* Adaptors with 5 to 6 pins can generally be purchased from most dental suppliers

The D2/D3 pre-doctoral and Endo Lab (D1) are set up for 6 pin hand pieces and swivels. The swivel is necessary for the fiber optic light source. For additional questions or specific hand piece information you may want to contact our Dental Maintenance at (206) 543-5958

Cubicles (Operatories)

- Each candidate will be assigned a numbered Cubicle in the clinic by which the WREB will correspond to the applicant's numbered ID Badge issued at Orientation.
- Review (Appendix I) for dental unit locations and clinic floor diagrams.

Dental Chair:

The Pelton Crane "Coachman" dental chairs have foot switches on the floor and finger switches on both sides of the chair backs for positioning the patient. The chairs are bolted to the floor to prevent sliding but can be swiveled 30 degrees in either direction by loosening the black round knob located just beneath the back of the chairs.

- The D3 Restorative clinic has new ADEC chairs and can switch from left to right handed units, but have the same exact operation and functionality of the D2 Dental units.



Example of dental clinic unit used during WREB examinations

Operatory Light:

The A-Dec operatory light has an on-off switch located behind the reflector. Please do not attempt to clean the reflector.

Digital Radiography:

The School of Dentistry will be using digital radiography for all restorative cases and conventional radiography for the Endodontic portion of the exam. Digital Phosphorous plates can be checked out from the Dispensary. All candidates will be provided a log on to access MiPacs digital imaging system, instructions/Computer access and how to save to for examiner review.

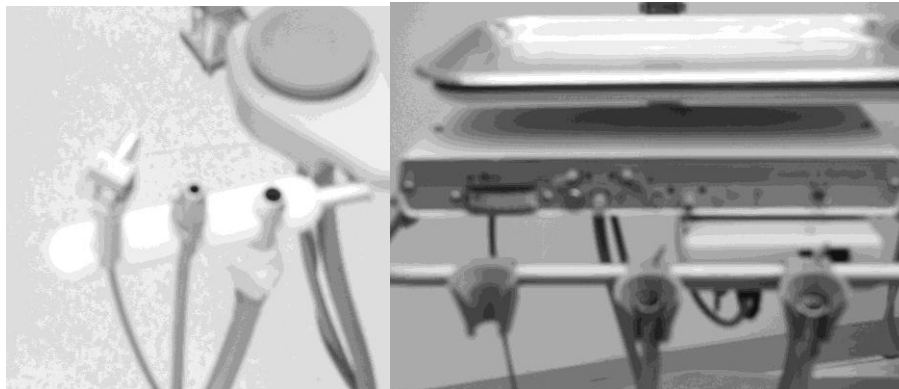
- Appointments can be made in the restorative clinic or oral radiology. External candidates should contact Jay Priebe (206) 685-7601 to discuss scheduling and pricing of PA/BW or FMX series.
- Payment for radiology services is due at time of service.
- Jay Priebe will assist with having the images exported from MiPACS and saved on the examiner server.
- The School of Dentistry does NOT have capability to transfer images from one DiCOM server to another.

Ultrasonic connections:

All units are equipped with quick-disconnect hook-ups for use with ultrasonic scalers. Candidates will need to attach their own ¼" male quick-disconnect fitting to Cavitrons for use in our dental units. Electrical and water outlets are located on the box on the left side of each unit. The School does NOT provide ultrasonic scaler, tips, or the ¼" male quick-disconnect fitting.

Air, Water and Suction Delivery System (A-Dec):

- *Master Switch* – the first switch to the left on the manifold turns on the light, air, water, and vacuum system. An orange light beneath the master switch indicates the system is on.
- *The air/water syringe tip* – pushes in and pulls out.
- *Chip Air for the hand piece* - turning the small yellow knob adjusts the volume of air.
- *Water for the hand piece* – There is an on/off switch for the water located just to the left of the blue control knob for water volume. This blue knob controls the water to the high-speed fiber-optic line, which hangs on the right hand side of the unit. There is no water to the low speed line in the center.



NOTE: The following equipment/supplies are not provided:

- Hand piece or swivels
- Curing light
- Impression gun
- Casting gold
- Ultrasonic scalers
- Heat source
- Carts, Lockers, instruments
- Patients
- The Acaddental ModuPro kit (MPE E120 is the only kit used at our exam and is available for purchase via the School WREB Coordinator; Jay Priebe)

Storage:

- The UW School of Dentistry does not provide storage lockers for candidates. Candidates may use the cabinet located in their assigned cubicle during the examination, however, all items must be removed by the end of the last day of the exam – June 16, 2012. Items left in the clinics or cabinets following the exam will be held by the site coordinator – Jay Priebe, Room D358, (206) 685-7601 for 7 days, after which they will become the property of the UW School of Dentistry, or donated appropriately. The UW School of Dentistry recommends that candidates do not leave items of value unlocked in the cabinets or clinics at any time.

Medical Emergencies:

- Please follow the instructions posted in each cubicle in the clinic (Appendix C). In case of a medical emergency, dial '911'. One person should stay with the individual experiencing a medical emergency and one individual should go outside on the first floor between the D and B Wings adjacent to the S-1 parking lot, to direct medical personnel to the patient.

Body Fluid Exposure: (Appendix C):

- Perform First Aid
- Eyes: Wash eyes at eyewash station for 15 minutes
- Other: Wash injured area with soap and water for 15 minutes and apply appropriate dressing from First Aid kit.

Notify Clinic Manager/ Site Coordinator and call School of Dentistry Exposure Hotline at 206-351-2268, immediately. The Employee Health department recommends starting laboratory tests and medications for HIV post-exposure prophylaxis within 1 to 2 hours after exposure. Clinic Manager/ Site Coordinator will provide source patient counseling and escort the source patient to UWMC lab for a blood draw. Candidates will be seen in Employee health for counseling and/ or a blood draw.

- Work with Clinic Manager/ Site coordinator to fill out an Occupational Accident Report (OAR) per UW policy

Personal Protective Equipment:

- Appropriate protective clothing, including disposable gowns are available (one per day) and must be worn in occupational exposure situations
- Disposable gloves, masks, gowns, unit barriers are located in each operator
- Candidates are to provide their own OSHA acceptable protective glasses. The school will provide protective glasses for patients on a "Loan" basis.
- Chlorhexidine antiseptic wipes are available in every unit and should be used following the "Wipe, Discard, Wipe" methodology.

Patient Treatment Area & Clean up Procedures:

- Candidates will be assigned a clinic unit including a mobile tabletop to use as a work surface. They are responsible for the care and cleanliness of the entire clinic unit.
- Candidates are responsible for any damage to equipment. In addition to the placement of paper covers on counter tops, all work surfaces are to be disinfected between patients with materials provided.
- All items should be disinfected at the end of each day.

Prior to each procedure:

- Complete a 10 step unit inspection for unit operation (mounted in each dental unit).
- Using a germicidal disposable cloth, the assigned clinic units should be wiped down and infection control barriers should be placed.
- Infection control barriers are located at the entrance to each clinic and are available for use by the candidate or their assistant.
- Barriers are to be taken as needed, and are not to be stored in clinic units.

At the end of each procedure:

- The high volume evacuation hose and saliva ejector hose must be flushed.
 - This is accomplished by holding the suction tip directly in the water stream from the tap in the sink. Run for approximately 60 seconds.
- Remove all infection control barriers from the light, chair and work surfaces being careful to avoid cross-contamination.
- Dispose of the coverings in large containers available in each end of the clinic. All surfaces, especially those not covered, should be disinfected with the germicidal wipes as provided. Be sure that no debris remains between the seat and back of the chair.
- Mercury and amalgam scraps should be placed in the special containers marked “Amalgam” which is provided in each cubicle. Be sure to tighten lid after each use.
- Ziploc bags are provided inside the cabinet under the sink for empty amalgam capsules. Be extremely careful not to allow mercury and amalgam to drop on the floor.
 - Should this occur, notify WREB Exam Staff and the Maintenance Staff will be called for clean up with a spill kit.
- Needles, carpules, and other sharp or breakable objects must be placed in the red “Sharps” containers in each cubicle. These objects present serious hazards to the personnel collecting waste and must NEVER be placed in regular waste containers.

End of Day Procedures:

- Wearing clean gloves use the germicidal wipes provided to clean work surfaces in the cubicle.
- Turn off the master switch of the A-Dec unit.

Bio-hazardous Waste:

- Bio-hazardous waste includes any item contaminated with blood or saliva, such as gauze, dental floss, cotton rolls, etc. Bedside bags are available in each unit for disposing of materials at chair-side.
- All bio-hazardous waste requires special handling; it should be disposed of in clearly marked “RED” containers in the clinic.
- Any biohazard materials found in the trash will be reported to the WREB examiners for management of the issue.

Instrument Sterilization (Pre-Sterilization, Room D352/Sterilization, Room D338- Appendix C).

- The operating hours for sterilization is 7:00am – 6:00pm during the WREB examination.
- Central Sterilization services do not assume responsibility of lost/damaged items.
- The School of Dentistry staff will sterilize **clearly labeled, packaged instruments; however, candidates are responsible for debriding instruments and packaging in preparation for sterilization.** Items requiring ultrasonic processing should be delivered and checked into D352 for processing.
- Sterilization pouches and supplies will be distributed to the dental units along with candidate labels. It is the candidates’ responsibility to clean, package and marked with candidate sterilization labels

- The UW School of Dentistry Sterilization Staff reserves the right to refuse sterilization service for inadequately or inappropriately packaged materials. The staff will be happy to assist candidates with packaging or sterilization of unusual size items.
- The sterilization facility has dry heat, autoclave, and chemiclaves. Unless otherwise specified, your instruments will be processed in the steam autoclave.
- *PLEASE ALLOW 90 MINUTES TURN AROUND FOR INSTRUMENT PROCESSING.*
- Central Sterilization complies with Federal AAMI guidelines for sterilization of dental instruments and CDC/OSHA infection control standards. Daily biological spore and air flow testing is conducted ensuring sterility of instruments. Records of such testing are available for review upon request.

Laboratory Facilities



The dental laboratory is located in room D165 and is open during the hours of the WREB Exam. The facility has 6 ovens, 4 casting machines, 4 sandblaster, 4 lathes, model vibrators, and vacuum mixers. Laboratory supplies provided include Cristobolite, Cera-Fina, Resin rock, waxes, sprues, pins, Prevox, and lining materials. **The University does not rent or loan lab or other equipment, ModuPro, adapters, heat sources, instruments, or hand pieces.**

Endodontic Lab

The Endodontic exam will be held in the D1 lab (Appendix A). Candidates will be mount his/her own ModuPro on a manikin (magnetic type) which is provided in our D1 Dental Simulation lab.

The University of Washington will **NOT** supply the ModuPro for candidates, but has available for sale..

- The cost of the Endo Modupro Kit is \$ 115.00, which is school pricing with Accadental. www.acadental.com
- Contact Jay Priebe for further information on reserving/ purchasing a Modupro for the WREB exam.
- Mounting kits are available on a limited basis and can be rented for \$15.00.

The Accadental ModuPro kit (MPE E120 is the only kit used at our exam site. The Columbia dent form will not work with our manikin

Commercial Dental Labs

The following list of local commercial laboratories that the candidate may use for fabrication of gold castings (page 10). The candidate should contact their lab of choice as soon as possible. Please note that this listing does not constitute a recommendation and are located within the vicinity of the University of Washington.

The School of Dentistry has designated room D251 (patient reception area) as the pick-up and drop-off location for commercial laboratories. Candidates wishing to use the pick-up area must register with the staff in advance in D251. Please provide the candidate name and number, patient name, name of the commercial lab and the lab telephone number at the time of registration. Please be sure to have payment arrangements for the lab made in advance.

Commercial Dental Labs - University of Washington Vicinity 2011

Crystal Dental Lab 414 3 rd Ave West - Seattle WA 98119 (206) 283-6464
D&D Dental Lab 6206 168 th St. SW # D - Lynnwood, WA 98037 (425) 742-0100
Harrison Dental Lab 206 Kirkwood, WA 98032 (425) 822-4525
Seattle Dental Lab 1305 4 th Ave, #1001 - Seattle, WA 98101 (206) 621-8698

Dental Assistants

The following are temporary dental assisting agencies:

- Dental Professionals, Ann Chartrand (206) 767-4851
- Dental Personnel Services, Inc. (360) 659-8089

Dental assistants may be hired via notices posted on various bulletin boards, throughout the Health Science complex. For further information about posting information, contact the School of Dentistry site coordinator, Jay Priebe at 206-685-7601.

University of Washington School of Dentistry Contact Information

- Jay Priebe – UW School of Dentistry Clinic Operations Manager and Site Coordinator
206-685-7601 or 206-330-6478 cell
e-mail: priebej@u.washington.edu
- Dave Fox – UW School of Dentistry Maintenance Manager
206-543-5958
Email: repair@dental.washington.edu

Dental Supplies – Operative

Supplies listed below are provided to all candidates during the exam. They are available at the dispensary located inside the D2 clinic. Alternatively, Burkhart Dental Supply will be present with a variety of disposables and materials free for your use, as well as selected items for sale during the exam.

Amalgam capsules and TPH composite	Evacuator tips	Polishing powders for restorations
Articulating paper	Face masks	Prophy paste
Autoclave tape	Facial tissue	Retraction cord
Infection control barriers for chairs and unit including trays	Floss	Rubber dam
Cement – temporary and permanent	Gloves	Rubber dam napkins
Cotton pellets	Hemodent	Saliva ejectors - standard
Cotton rolls	Impression materials	Soap
Cotton squares	Local anesthetic	Styrofoam trays
Cotton swabs – q-tips	Matches	Topical anesthetic
Counter paper	Mouthwash	Trash bags
Disinfectant	Needles – short and long	Wedges
Drinking cups	Paper towels	X-ray developer and fixer
Dycal	Patient bibs - napkins	X-ray film

Dental Supplies – Endodontic (Available in D165 day of exam)

Endodontic files	Gutta percha	Medicine cups
Suction tips	3 cc irrigating syringes	Roth Root sealer
Bleach and paper cups	2 x 2 gauze	RC-Prep (EDTA or other materials)
Chloroform	X-ray film	Cotton pellets
Needles	Red rope wax	Hand dip tanks
X-ray developer and fixer	Absorbent points	Daylight loaders located in dental clinics
Face Masks	Gowns	Gloves
Paper towels	Paper for bench top	Rubber dams
X-ray film	X-ray mounts – 4 hole	X-ray clips

Our hand piece hook-ups are designed for a 6-hole hand piece or adapter. Adapters are not supplied. Air and water are available. Gas and 95% alcohol are available for heat source. The Candidate must supply his own heat source – Bunsen burner, etc. The School does not supply a heat source for candidates. The University of Washington will not be supplying the ModuPro. Candidates should contact Acadental directly at www.acadental.com or by phone at 913-384-7390 for purchasing the Acadental ModuPro kit. Acadental ModuPro kit - (MP E110)

Additional Resources for Dental Supplies:

- Burkhart Dental Supply
<http://burkhartdental.com>
1-800-828-8479
- Arnold Dental Supply
<http://www.arnold-dental.com>
425-712-8786
1-800-562-6645

Information for Screening Prospective WREB Patients

Candidates must provide their own patients. The School of Dentistry does not provide patients for candidates. In accordance with Washington State Law, candidates may not review University patient records. Candidates may utilize clinic facilities at the School of Dentistry for screening patients at specified locations and times. Candidates may schedule screening appointments beginning Monday, May 2, 2012, by calling the Clinic Receptionist at 206-543-6494. Screening hours are Monday through Friday between 10:00am – 12:00pm and 2:00pm – 4:00pm. The last day to screen patients is Monday June 10, 2012.

Candidates may take dental radiographs for prospective patients by appointment in the UWSOD Radiology clinic. Candidates will pay \$71 for each FMX. Contact Radiology at 206-543-5006, Room B307 to schedule an appointment. Radiographs are digital imaging style using PSP plate. The UW SoD Radiology clinic provides PSP plates and barriers. Once the images are completed the Site Coordinator will assist with having the images transferred to the WREB exam file.

External candidates wishing to screen patients may do so during limited hours the week of June 4th thru 8th and June 12th 2012. Please contact the site coordinator to make arrangements for screening and radiology scheduling. The coordinator will identify if films should be taken in the clinic or oral radiology based on clinic and x-ray equipment availability and will assist with scheduling appointments in radiology

The candidate must provide:

- Rinn Kits
- Gloves, face masks, protective eye wear and clinic apparel
- Sterile instruments
- Charting materials

The School of Dentistry will provide:

- Radiographic machines
- Dental treatment area
- Paper goods and barrier control covers

Supervision:

- The School of Dentistry Faculty will provide general supervision of patient screening. Responsibility for patient selection for the board examination belongs to the candidate.

Fees:

- There is no charge for the use of the Clinic facilities, however in exchange for this courtesy, we expect candidates to conduct themselves in a professional manner, adhere to standard infection control procedures, and clean the treatment area at the completion of the screening visit.

Limitations:

- External candidates are not registered students at the University of Washington and not license in this state, therefore, they may not provide any care for patients prior to the Board Examination. Screening

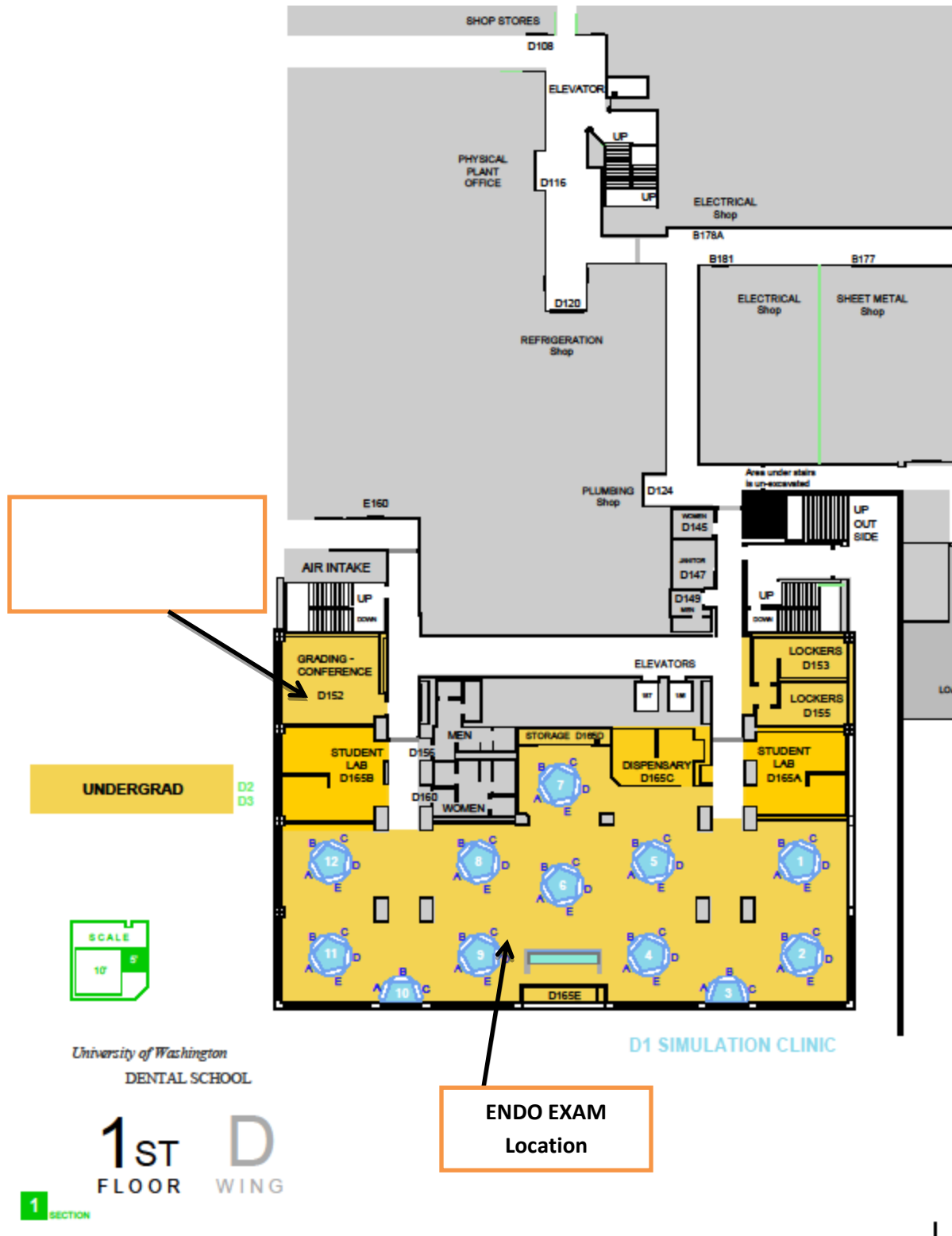
of patients in the School Facilities and must have Faculty supervision. External candidates must work with the site coordinator when needing to screen patients to ensure faculty availability

Chambered Nautilus Bed Breakfast Inn 5005 22nd Avenue Northeast, Seattle, WA 98105 206-522-2536 800-545-8459 www.chamberednautilus.com	UNIVERSITY DISTRICT College Inn 4000 University Way Northeast, Seattle, WA 98105 206-633-4441 www.collegeinnseattle.com	Hotel Deca 4507 Brooklyn Ave NE Seattle, WA 98105 206-634-2000 800-899-0251 www.hoteldeca.com
------------------------------------------------------------------------------------------------------------------------------------------------------------------------------------------------------	---------------------------------------------------------------------------------------------------------------------------------------------------------------------------------------	--------------------------------------------------------------------------------------------------------------------------------------------------

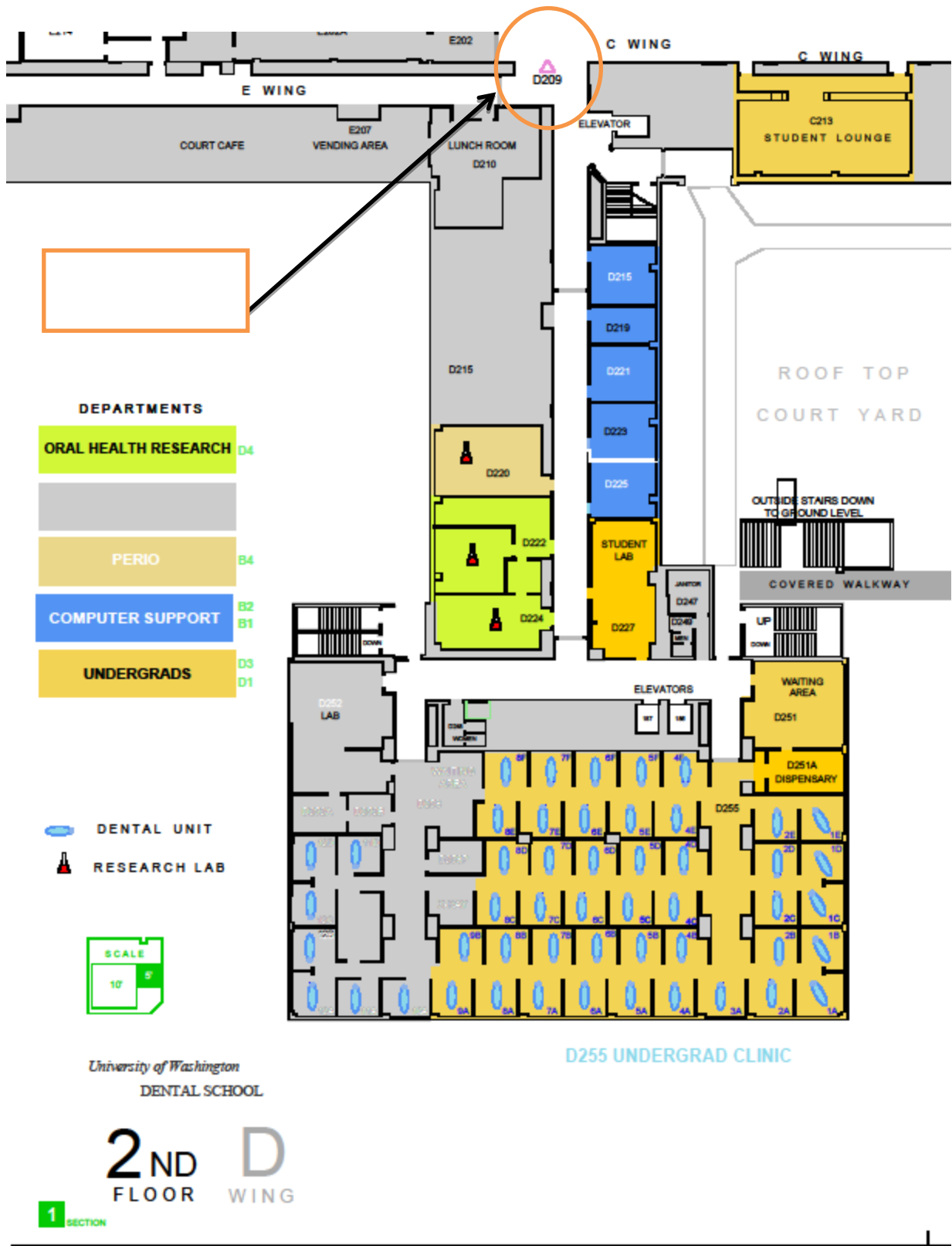
LODGING

<p>Silver Cloud Inns Seattle 5036 25th Avenue Northeast Seattle, WA 98105 206-526-5200 800-205-6940 (toll-free) www.silvercloud.com/O9home.htm</p>	<p>University Inn 4140 Roosevelt Way NE Seattle, WA 98105 206-632-5055 800-733-3855 (toll-free) www.universityinnseattle.com sales@universityinnseattle.com</p>	<p>University Travelodge 4725 25th Avenue Northeast, Seattle, WA 98105 206-525-4612 www.seattleuniversityhotel.com</p>
<p>University of Washington* Visiting Personnel (Dorm Rooms) 206-616-1031 *Reservations not accepted until after January 4, 2010</p>	<p>Watertown 4242 Roosevelt Way NE Seattle, WA 98105 206-826-4242 866-944-4242 www.watertownseattle.com</p>	<p>LAKE UNION AREA Residence Inn Seattle - Lake Union 800 Fairview Avenue North Seattle, WA 98109 206-624-6000 http://www.marriott.com/SEALU</p>
<p>PIKE PLACE MARKET Inn at the Market 86 Pine Street Seattle, WA 98101 206-443-3600 800-446-4484 (toll-free) www.innatthemarket.com</p>	<p>DOWNTOWN SEATTLE Fairmont Olympic Hotel 411 University Street Seattle, WA 98101 206-621-1700 www.fairmont.com/seattle</p>	<p>Crowne Plaza Downtown 1113 6th Avenue Street Seattle, WA 98101 206-464-1980 877-227-6963</p>
<p>Summerfield Suites by Wyndham 1011 Pike Street Seattle, WA 98101 206-682-8282 www.wyndham.com</p>	<p>Roosevelt Hotel 1531 7th Avenue Seattle, WA 98101 206-621-1200 800-663-1144 www.roosevelthotel.com</p>	<p>Sheraton Seattle Hotel and Towers 1400 6th Avenue Seattle, WA 98101 206-621-9000 www.sheraton.com/seattle</p>
<p>Warwick Hotel 401 Lenora St Seattle, WA 98101 (206) 443-4300 http://www.warwickwa.com/</p>	<p>The Claremont Hotel 2000 4th Avenue Seattle, WA 98101 206-448-8600 800-448-8601</p>	<p>Seattle Westin 1900 5th Avenue Seattle, WA 98101 (206) 728-1000 www.starwoodhotels.com</p>

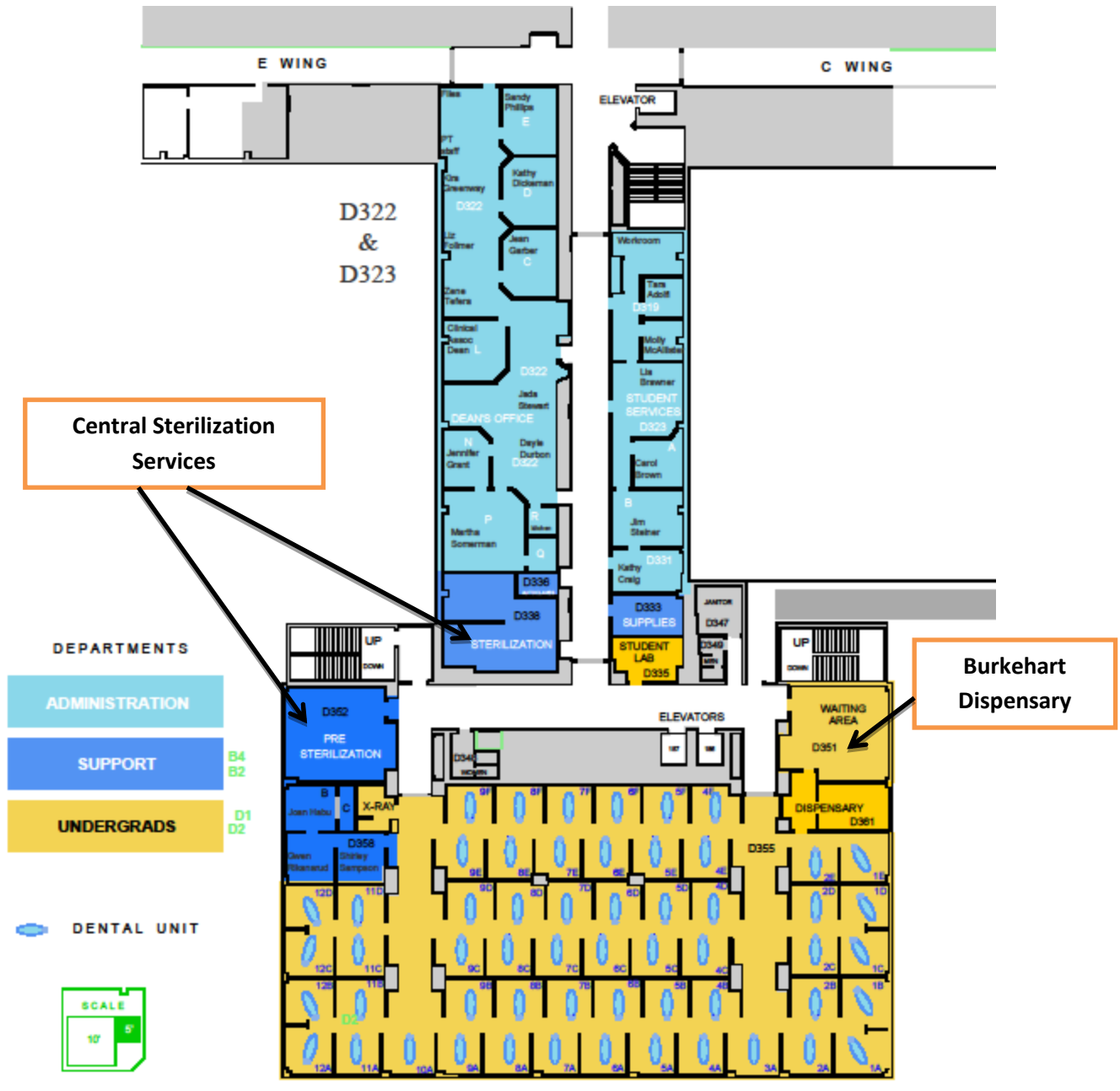
We are unable to provide rates due to the variance of rates throughout the week and year.



D1 Lab- ENDO Exam Area (Appendix A)



D2 Candidate Exam Area- Exam Operator (Appendix B)



University of Washington
DENTAL SCHOOL

D355 UNDERGRAD CLINIC

3RD **D**
FLOOR WING
1 SECTION

D3 Candidate Clinic & Examiner Grading Area (Appendix C)



Medical Emergency Procedures

LIFE THREATENING EMERGENCIES

1. Call 911. If someone else is around, ask them to call 911 while you stay with the individual needing attention.
 - o Report the following information to the 911 operator:
 - Campus location
 - Your name
 - Description of emergency
2. Send someone to the loading dock between B and D wings opposite South Campus Center to assist responding emergency personnel.
3. Complete the appropriate report
 - Complete an OARS report for students, staff or faculty at <http://www.ehs.washington.edu/ohsoars/index.shtm>.
 - Complete the Patient Event form for patients and visitors at www.dental.washington.edu/intranet/patient_event_form/index.php.

NON LIFE-THREATENING EMERGENCIES

1. Use the first aid kit if necessary – First aid kits are available in all clinics and laboratories.
2. Contact your personal health care provider OR, if necessary, go to the UW Medical Center Emergency Room (normal fees will apply). Students may contact Hall Health at 685-1011. Campus Health Services at UWMC should only be used in cases involving body fluid exposure.
3. Notify supervisor/instructor **AND** the Exposure/Incident Hotline @ 206-351-2268.
4. Complete the appropriate report
 - Complete an OARS report for students, staff or faculty at <http://www.ehs.washington.edu/ohsoars/index.shtm>.
 - Report patient and visitor incidents via the Patient Event form at www.dental.washington.edu/intranet/patient_event_form/index.php.

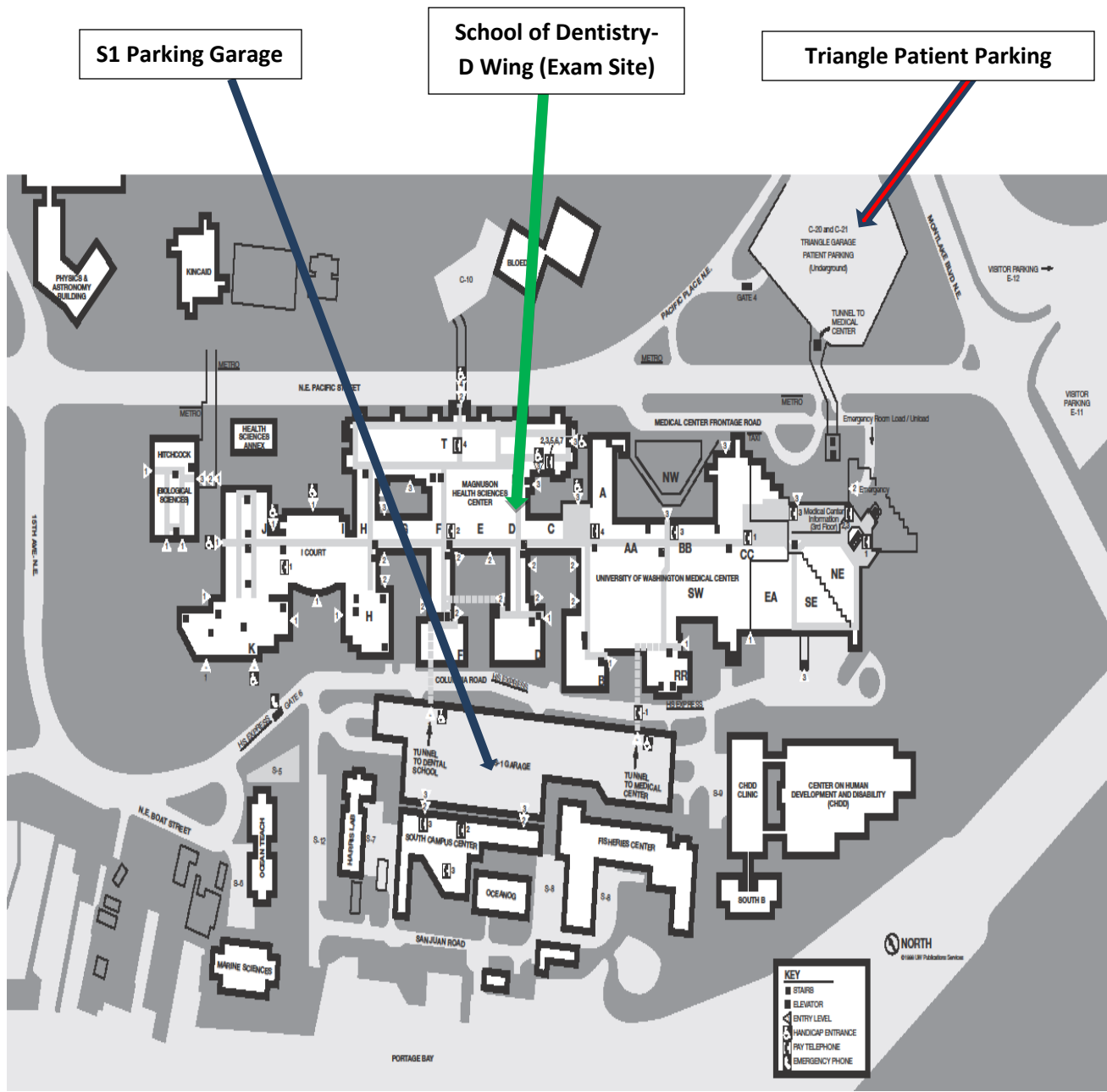
BODY FLUID EXPOSURE

1. If instructed to perform first aid:
 - EYES: Wash eyes at eyewash station for 15 minutes while holding eyelids open.
 - OTHER: 1. Scrub exposed area thoroughly with sudsing soap and warm water for 15 minutes. 2. Remove the contaminated needle or instrument from the work area.
2. Between 8:00 AM and 5:00 PM: Notify supervisor/instructor **AND** call the Exposure/Incident Hotline at 206-351-2268.
3. After 5:00 PM: Go directly to the UWMC Emergency Room **AND** notify the Exposure/Incident Hotline at 206-351-2268 by leaving a detailed message.
4. Complete the appropriate report
 - Complete an OARS report for students, staff or faculty at <http://www.ehs.washington.edu/ohsoars/index.shtm>.
 - Report patient and visitor incidents via the Patient Event form at www.dental.washington.edu/intranet/patient_event_form/index.php.

NOTE: When completing the Patient Event form, enter your main User Name with sod\ before it (for example: sod\janesmith). Enter your main SOD password (the same one you use to log onto your computer for work).

Last updated 10/29/2010

Appendix C

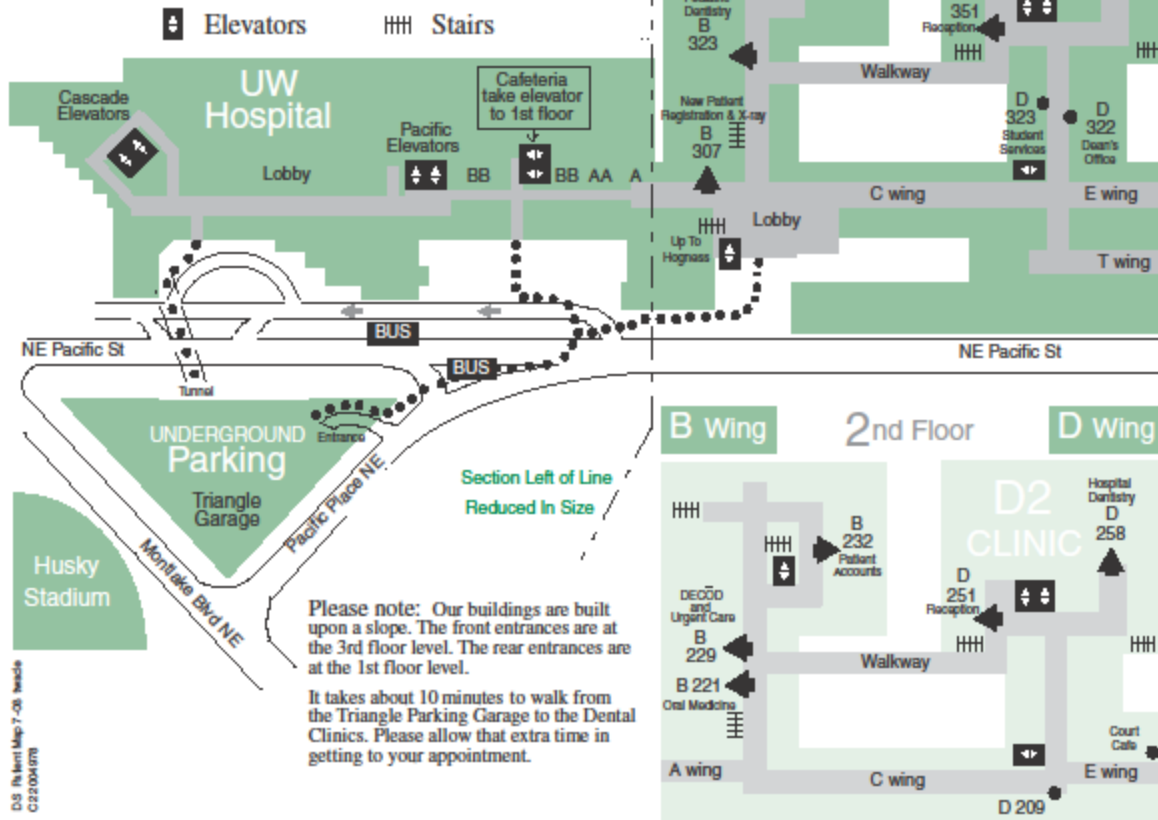


Appendix D

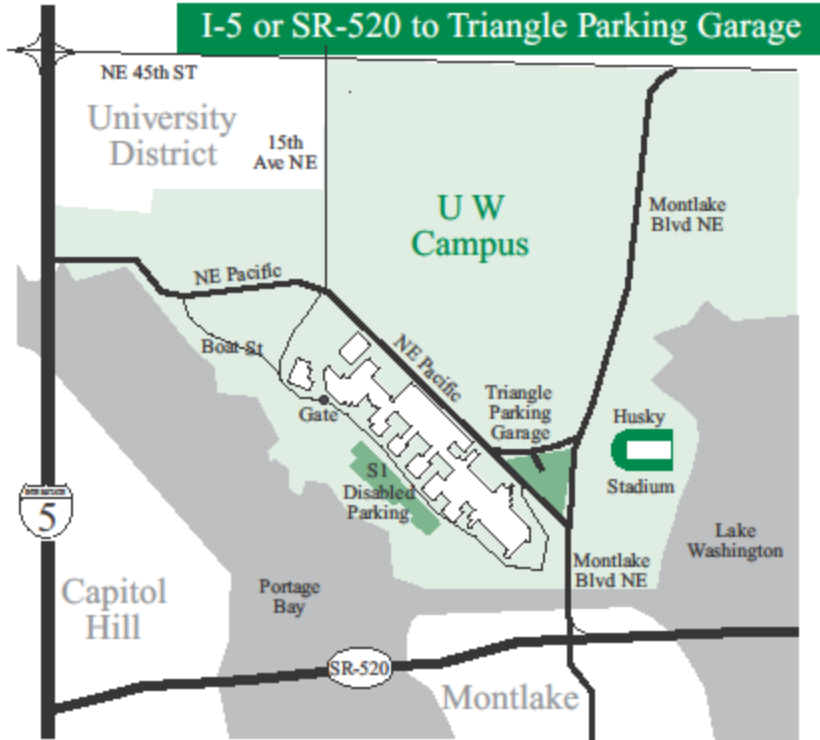
University of Washington
School of Dentistry
 PATIENT GUIDE

- | | |
|---------------------------------------------------------------------------------|-------------------------------------------|
| Development & Continuing Dental Education (CDE), B471 | Hospital Dentistry, D258 |
| D2 Clinic, D251 | New Patients & Records Request, B307 |
| D3 Clinic, D351 | Oral Medicine, B221 |
| Dean's Office, D322 | Oral Radiology (x-ray) B307 |
| DECOD Clinic, B229 | Oral Surgery, B350 |
| Endodontics (root canals), B470 | Orthodontics, B338 |
| Faculty Practice, D453 (Restorative, Prosthodontics, Endodontics, Periodontics) | Patient Accounts, B232 |
| Fears Clinic, D458 | Patient Services, B452 |
| Grad Periodontics, B403 | Pediatric Dentistry, B323 |
| Grad Prosthodontics, B469 | Research Clinic, D453 |
| | Student Services, D323 |
| | Urgent Care Clinic, B229 & Patient Intake |

Note: The letter at the beginning of a room number indicates the wing. The first number indicates the floor. Example, D358 is in the D wing on the 3rd floor.



Appendix E



From I-5

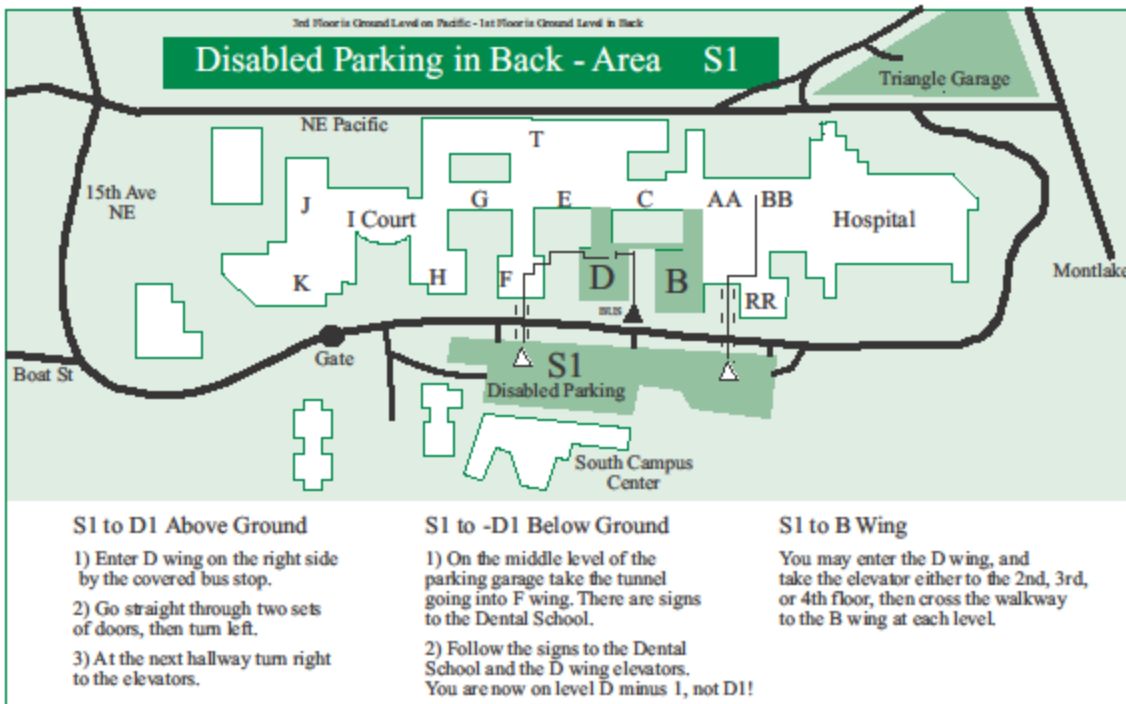
- 1) Take I-5 to the NE 45th St exit.
- 2) Go east on NE 45th St, about eight blocks.
- 3) Turn right on 15th Ave. NE.
- 4) Go south about 6 blocks.
- 5) Turn left at light onto Pacific.
- 6) Turn left at the first left turn off Pacific, there is a light.
- 7) Turn right into the Triangle Garage.

From SR-520

- 1) Take the Montlake exit.
- 2) Go north on Montlake over the bridge.
- 3) At the first light after the bridge turn left onto Pacific.
- 4) Turn right at the next corner and around into the Triangle Garage.

Disabled/Visitor Parking

- 1) At Pacific and 15th Ave NE continue south on 15th until it merges with Boat St.
- 2) Continue left on Boat St and through the gate and then into the S1 parking area.



S1 to D1 Above Ground

- 1) Enter D wing on the right side by the covered bus stop.
- 2) Go straight through two sets of doors, then turn left.
- 3) At the next hallway turn right to the elevators.

S1 to -D1 Below Ground

- 1) On the middle level of the parking garage take the tunnel going into F wing. There are signs to the Dental School.
- 2) Follow the signs to the Dental School and the D wing elevators. You are now on level D minus 1, not D1!

S1 to B Wing

You may enter the D wing, and take the elevator either to the 2nd, 3rd, or 4th floor, then cross the walkway to the B wing at each level.

Appendix F

INSTRUMENT CHECK-OUT AGREEMENT

I, _____, acknowledge that the UW School of Dentistry has agreed to loan me the following items for use during the Western Regional Dental Board exam:

ASTAR ALD LABEL MUST BE APPLIED IF APPLICABLE:

<i>Restorative Cassette</i>	<i>Perio Cassette</i>	<i>Endo Cassette/Mounting Kits</i>

_____ I agree to return all contents as received. I further agree to pay associated replacement costs of any missing or damaged items.

_____ I agree to pay a non-refundable instrument rental fee of \$125.00 (waived for UW SoD Students).

_____ I agree to pay a damage deposit of \$500.00 which will be refunded upon verification that the instruments have been returned.

NOTE: Any discrepancies must be reported within 24 hours of receiving these items.

Candidate Signature: _____ Date: _____

PLEASE PRINT

Student Name _____

Address _____

City _____ State _____ Zip Code _____

Phone with Area Code _____ Cell Phone with Area Code _____

For Office Use Only			
Deposit Fee (\$500) received:	Date	Check or Cash	Your Initials
Rental Fee (\$100) received:	Date	Check or Cash	Your Initials
Signature verification for returned items			
Marlene Snyder			Date
Jay Priebe/Tracy Jackson			Date

\\sod\files\deans\OCS- OPS\WREB\WREB 2011\Instrument Checkout Agreement Updated 2011.doc

Appendix G

