

**University at Buffalo
State University of New York**

**School Information for
WREB
Candidates**

Western Regional Examining Board

March 11-March 14, 2012

Table of Contents	Page #
Travel and Housing Arrangements	
Airport Information	3
Ground Transportation To/From Airports	3-4
Lodging	4
Dental School Facility and Services	
Building Access and Hours	5
Parking	5
Registration and Identification Badges	5
ATM Machine	5
Food Service	5
Patient Screening and Radiographs	5
Preparing for the Exam	
Cubicles (Operatories)	6
Equipment, Instruments and Materials	6
Facility Fee	7
ModuPro for Endodontics Exam	7
Internal Laboratory	7
Sterilization	8
During the Board	
Infection Control	8
Medical Emergencies	9
Handbook Appendices	
Dental Supplies	10
Contact Information	11
Floor Plans	12-15

WELCOME WREB CANDIDATE

The School of Dental Medicine occupies facilities in Squire and Foster Halls on the University at Buffalo's health science-oriented Main Street (South) Campus. Laboratories, research facilities, and the latest in clinics offer the postgraduate and graduate student research and educational opportunities in six departments in the School of Dental Medicine, as well as specialty certification in various certificate programs.

Established in 1892 as the School of Dentistry with 46 students and 10 faculty, the programs and scope of the school as well as its name and orientation, have expanded. Today, the school offers education and training leading to the D.D.S., M.S., and Ph.D., degrees, as well as certificates of proficiency in seven specialty practice areas.

It is important that you understand your responsibilities as a WREB candidate at this site. Review the following material thoroughly. More detailed information regarding the University at Buffalo School of Dental Medicine can be accessed from our website at: <http://www.sdm.buffalo.edu>.

AIRPORT INFORMATION

Buffalo Niagara International Airport

4200 Genesee Street

Cheektowaga, New York 14225

Phone: 716.630.6000

Toll Free: 1.877.359.2642

<http://www.buffaloairport.com/>

GROUND TRANSPORTATION TO/FROM AIRPORT

Rental Cars

Name	Website	Phone	Toll Free
Alamo on-site		(716) 631-2044	800-327-9633
Avis on-site	www.avis.com	(716) 632-1809	800-831-2847
Boulevard Van City (wheelchair accessible vans)	Vancitymobility.com	(716) 731-4335	800-876-2708
Budget on-site	www.budgetbuffalo.com	(716) 632-4662	800-283-4387
Dollar Car Rental		(716) 632-8300	
Enterprise on-site	www.enterprise.com	(716) 565-0002	800-736-8222
Hertz on-site		(716) 632-4783	800-654-3131
National on-site		(716) 634-9220	800-227-7368
Thrifty Car Rental		(716) 632-8400	

Shuttles, Vans, and Taxis

Name	Website	Phone	Toll Free
Airport Express	www.buffaloairportexpress.com	(716) 472-8580	800-604-1570
Airport Taxi on-site	www.buffaloairporttaxi.com	(716) 633-8294	800-551-9369
Ambassador Taxi			
A Touch of Class Car Service	www.touch-of-class-niagara.com	(716) 957-4192	877-957-4111

DRIVING DIRECTIONS and LOCAL ACCOMODATIONS:

The School of Dental Medicine is located in Squire Hall on the South Campus of the University at Buffalo. Please go to:

http://www.buffalo.edu/community/visitor_guide.html

for maps, directions and additional information.

ACCOMMODATIONS

You'll feel right at home in the Buffalo Niagara region no matter where you stay. Due to scheduled University and local events, we suggest you call in advance to make reservations if you plan on staying in Buffalo, NY over night prior to the examination. Hotels a short ride from the SDM include:

Courtyard by Marriott	http://www.marriott.com/BUFCY	(716) 626-2300
Hampton Inn, Williamsville. NY	http://hamptoninn.hilton.com/en/hp/hotels/index.ihtml?ctyhocn=BUFWVHX	(716) 632-0900
Hilton Garden Inn Buffalo Airport	http://www.hiltongardeninn.hilton.com	(716) 565-0040
Holiday Inn - Airport	http://www.hibuffaloairport.com	(716) 634-6969
Holiday Inn Express – Airport	http://www.hiexbuffaloairport.com	(716) 631-8700
Hotel Indigo	http://www.ichotelsgroup.com	(716) 689-4414
Buffalo Niagara Marriott	http://www.marriott.com/hotels/travel/bufny-buffalo-marriott-niagara/	(716) 689-6900

BUILDING ACCESS AND HOURS

Access to Squire hall is through the main entrance from 6:00am-6:00pm.

PATIENTS & PARKING

Non-Buffalo candidates MUST have their patients sign appropriate Buffalo SDM consents and HIPAA forms prior to the examination. The site coordinator will collect these forms.

Parking for patients is in the Squire or Kimball Tower Lots. Non-Buffalo candidate parking is in the Michael Lot. The Buffalo South Campus map can be downloaded at:

<http://www.buffalo.edu/buildings/>

REGISTRATION AND IDENTIFICATION BADGES

Numbered badges will be issued to candidates by WREB during candidate orientation and will serve as an I.D. throughout the examination. The badge must be worn at all times while in the building. Badges must be turned in at the completion of the examination as part of the check-out procedure with the Western Regional Examining Board.

ATM MACHINE

ATM machines are located in Harriman Hall, a short walk from Squire Hall through the back entrance.

FOOD SERVICE

There are vending machines located in the basement of the dental school. Several restaurants are located a short walk from Squire Hall

PATIENTS AND RADIOGRAPHS

Candidates are responsible for providing their own patients for the WREB exam.

Candidates should not ask the school for patients or patient records.

The Buffalo SDM does not provide examination (screening) or radiographic facilities for non-Buffalo candidates prior to the exam. The radiograph facilities are digital and all radiographs must be on radiographic film, acetate or high-quality paper and must be taken prior to the examination.

PREPARING FOR THE EXAMINATION

OPERATORIES

Each candidate will be assigned a numbered cubicle in the clinic by the WREB, which will correspond to the applicants numbered I.D. badge issued at orientation. Each cubicle is equipped with (1) dental chair (Adec), (1) delivery unit (Adec) and (2) operator's stools. Any equipment malfunctions should be reported to either the dispensary window or the dental repair department. Candidates will be allowed to move in to assigned cubicles at a time to be determined by the WREB. Please note: cabinets in cubicles are not available for storage. However, clinics are secured before and after exam hours.

Operatory assignments for WREB candidates will be posted in the clinic hosting the examination in Squire Hall. The dental exam orientation is scheduled to take place at 2:30 -3:30 pm the day prior to the clinical exam. It will take place in room 326 Squire Hall, 3435 Main Street, Buffalo, NY 14214.

CLINIC EQUIPMENT, INSTRUMENTS and MATERIALS:

Non-Buffalo candidates should furnish their own handpieces and instruments when possible. Certain items (STAR high-speed and slow-speed, amalgamator, curing light) are available; however candidates are encouraged to bring their own equipment only because of user familiarity. All dental chairs are equipped with an A-dec air/water syringe, a saliva ejector and HVE. The dental unit contains one fiber-optic line for high-speed, and one single line non-fiber optic for low-speed. HVE disposable tips are available in the clinic. All dental units have quick-connect water sources.

The SDM is unable to rent cavitrons (scalers) and cavitron tips to non-Buffalo candidates. Please make arrangements to bring your own. The SDM is unable to rent the Endo typodont as well. You will need to purchase this before arriving at the SDM for the examination. (See ordering instructions on next page.)

All instruments and equipment procured from the dispensing desk must be returned immediately after conclusion of the examination.

Consumable products necessary for the exam including gloves, masks, saliva ejectors, prophylactic materials and restorative materials are stocked in the clinic. Additional consumable products and materials needed for the examination are available from the dispensing desk. All supplies for the manikin portion of the WREB exam are also provided in a designated area of the clinic.

Items supplied by the school are listed in the supplements at the end of this handbook. Any equipment or supplies on loan/rental to candidates must be returned prior to check-out.

Buffalo DOES NOT have a dental supply store on its premises.

Please note: Candidates are to provide their own endodontic files and burs.

FACILITY FEE:

All non–Buffalo WREB candidates are assessed a non-refundable \$600 facility fee, which provides the candidate instruments for the examination. In addition to the facility fee, a \$1500 security deposit for the dental instruments IS REQUIRED for the examination. Both the payment and deposit must be in the form of certified checks to “U.B. FOUNDATION”. Please send both certified checks to Dr. Fadi Ayoub, 235-D Squire Hall, Buffalo, NY 14214. You must mail both checks at least a week before the exam.

All Buffalo post-graduate students (residents) who are taking the WREB, they will be assessed nonrefundable \$300 facility and instruments fee. In addition, there will be no required security deposit for Buffalo residents. A certified check should be made to “U.B. FOUNDATION” and hand delivered to Dr. Fadi Ayoub.

Damage or loss of University at Buffalo property will result in appropriate deduction of the cost of the item(s) from the candidate’s security deposit. If the amount owed exceeds the amount of the security deposit the candidate will be responsible for paying the difference.

Handpieces

All A-Dec dental chairs are permanently (cannot/must not be removed) equipped with Star 430SWL high speed handpieces with standard Power Optic 5-hole tubing and Star Quick-connect removable couplers, and Star Titan 3 slow speed handpieces with Midwest 4-hole couplers.

No adaptors are available. Handpieces are available for rental to candidates (see above). Please be sure you have and/or rent the required handpieces.

ModuPro for Endodontics Exam

The WREB endodontics examination will use the ModuPro Endo model #MP E120 MQR, screw mount. Make certain you are getting the typodont with the metal plate so that it will attach to the simulator heads. You will need to order this item and bring it with you since the college does not have any to rent. You will also need the entire kit, which includes the typodont, individual sextants, fixing gel and apex putty. You may order these direct from Acadental at <http://www.acadental.com>. There will be no shrouds on the manikins.

Internal (Casting) Laboratory

Candidates have access to one laboratory during the exam, Room B28, which is available only during regular exam hours. The following items are available to candidates for use in the clinical laboratory:

Casting machines

Dental Lathes

Furnaces

Model trimmers

Pindex machine

Sand blast cleaners

Gas

Vibrators

Whip Mix vacuum mixing machines

Absolutely no persons other than candidates will be allowed in labs. Please note that the school does not use any outside labs. If this is something that you require, please do any research or make arrangements prior to your arrival.

STERILIZATION

Instruments that belong to you should be properly cleaned, dried, bagged and marked with appropriate candidate I.D. # and then turned in at the 3rd floor clinical dispensary for steam sterilization. Sterilization time is a minimum of 3-4 hours.

Instruments that are rented from the school should be properly cleaned of cement/debris and turned in at the clinical dispensary. No turnaround time.

Sterilization services are available between 8:00 a.m. and 5:00 p.m. As stated above, there is a minimum turnaround time of 3-4 hours for personally owned items.

INFECTION CONTROL

Instrument sterilization services are available at the Central Sterilization Unit on the first and second floors. Take your instruments to the "contaminated instrument" delivery window at the dispensing desk. It will take 3-4 hours to sterilize your instruments.

Surface Asepsis:

Each cubicle is supplied with a spray bottle for disinfectant (Cavicide) and a canister of disinfectant towelettes (Caviwipes). Cavicide spray disinfectant is used to clean the large surface areas of the cubicle such as the counter-top, dental chair and operator stool. Caviwipe disinfectant towelettes are used to clean the surfaces of the cubicle not conducive to spray such as the light handles, switches, hose lines, drawer pulls, etc. The towelettes should also be used to wipe down the cavitron unit. To ensure proper disinfection, cleaned surfaces have to remain visibly wet for at least 3 consecutive minutes.

Barriers items including blue allwrap, papers for the counter top, head rest covers, patient napkins with disposable napkin chains and large plastic sleeves for the bracket tray are located in each clinic. Handles of the unit light, x-ray heads, light cure units and air-water syringes must be covered with clear plastic bags (provided). Plastic sleeves for the saliva ejector and air/water syringe are located in the cubicle.

Personal Protective Equipment:

Appropriate clothing is required (Scrubs, no open toed shoes)

Disposable gowns, gloves, masks are provided and located in the clinic.

Candidates are to provide their own OSHA-acceptable protective glasses or "loops".

Antiseptic soap and alcohol hand sanitizers available at sinks in the clinic.

Hazardous Waste:

Any blood/saliva-soaked waste is considered hazardous and must be disposed of in

biohazard bags and biohazard trash receptacles located throughout clinic.

Biohazard bags may be attached to the sides of the bracket tray. At the end of each session, bags should be sealed with tape and placed in biohazard waste containers (red), which are located throughout the clinic.

Sharps Disposal:

All needles, anesthetic cartridges, blades and any other potential sharps are to be placed in the red plastic sharps containers located under the counter of each cubicle.

MEDICAL EMERGENCIES

In order to alert emergency personnel to a medical emergency and not unduly alarm the patient population, the following protocol must be followed upon discovering a serious medical emergency:

- a. The patient will remain in the care of the candidate or person discovering the problem. The patient must not be left alone. The assistant or responsible person will be sent to report the problem to the Floor Examiner.
- b. The Floor Examiner will make a judgment as to whether a “coded” emergency exists.
- c. The assistant will retrieve an emergency kit and a request that the switchboard place an immediate call for emergency personnel.
 - If a “coded” emergency has been declared, the switchboard operator will immediately contact University Police, who will call for trained emergency personnel. University Police will meet the emergency personnel at the South campus entrance and escort them to Squire Hall.
 - If medical assistance only is needed, the switchboard operator will immediately notify the Oral and Maxillofacial Surgery resident on call.
- d. In all emergency situations:
 - Place the patient in a supine position, if unconscious
 - Assess consciousness and responsiveness
 - Check airway, assist respiration if indicated
 - Check pulse; be prepared to perform CPR if indicated.
- e. The Floor Examiner assumes responsibility for resuscitative procedure and the administration of emergency drugs until relieved by other personnel.

DENTAL SUPPLIES

Expendable Materials List To be supplied in sufficient quantities for all Candidates		
Amalgam Capsules	Floss	Retractive Cord
Articulating Paper	Gloves	Rubber Dams
Autoclave Tape	Headrest Covers	Rubber Dam Napkins

Cement	Hemostatic Agents	Saliva Ejectors, Standard
Cotton Pellets	Impression Materials (suff. for cast gold)	Soap
Cotton Rolls	Instrument Trays (disposable or metal)	Topical Anesthetic
2 x 2 Cotton Squares	Local Anesthetic	Trash Bags
Cotton Swabs	Matches	Tray Covers
Deck Paper	Mouthwash	
Disinfectant	Needles, Short and Long	
Drinking Cups	Paper Towels	
Evacuator Tips	Patient Bibs	
Face Masks	Polishing Materials for Restoration	
Facial Tissue	Prophy Paste	

Items supplied in laboratory:

- Casting tongs
- Crucibles & cradles for casting machines
- Plaster, dental
- Stone, dental

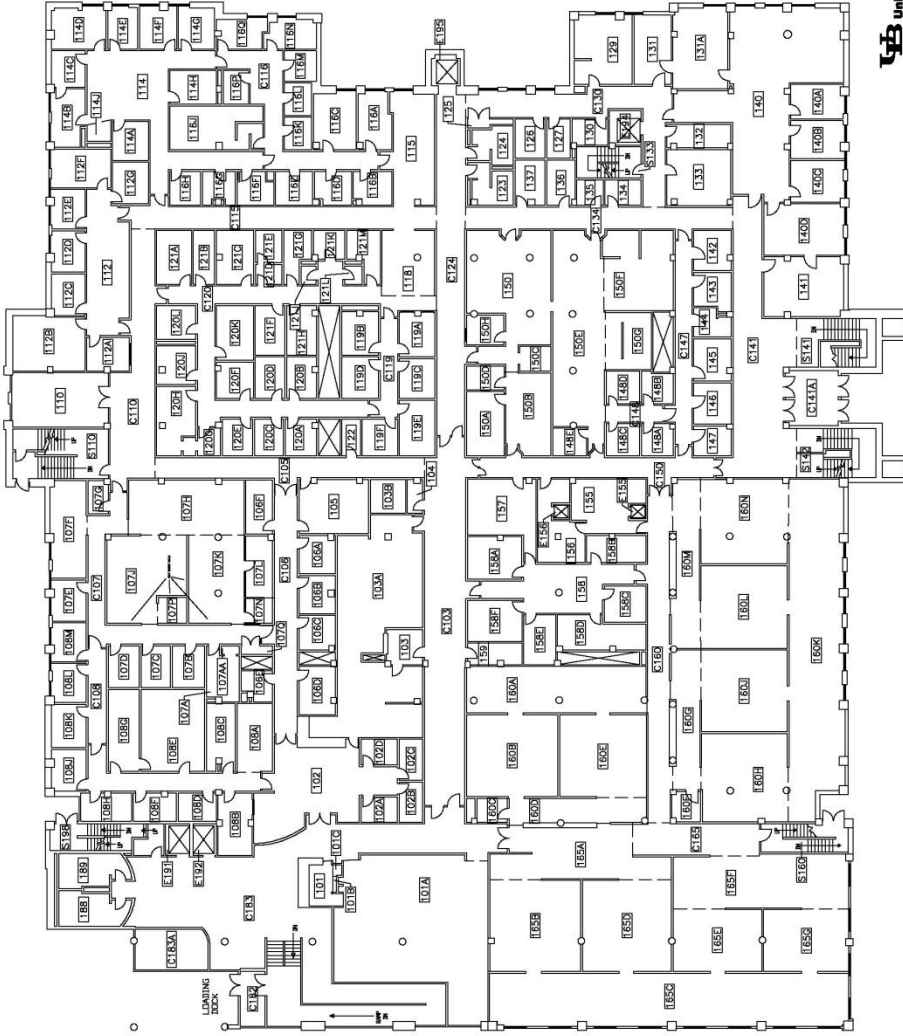
Items Supplied for Endodontic Exam:

- Air/water syringe
- Digital x-ray processor
- Endodontic sealer
- Face masks
- Gloves
- Gowns
- Isopropyl alcohol
- Manikin
- RC prep
- Rubber dam
- Sodium Hypochlorite (bleach)
- Zinc oxide
- Zip lock bag (from WREB)

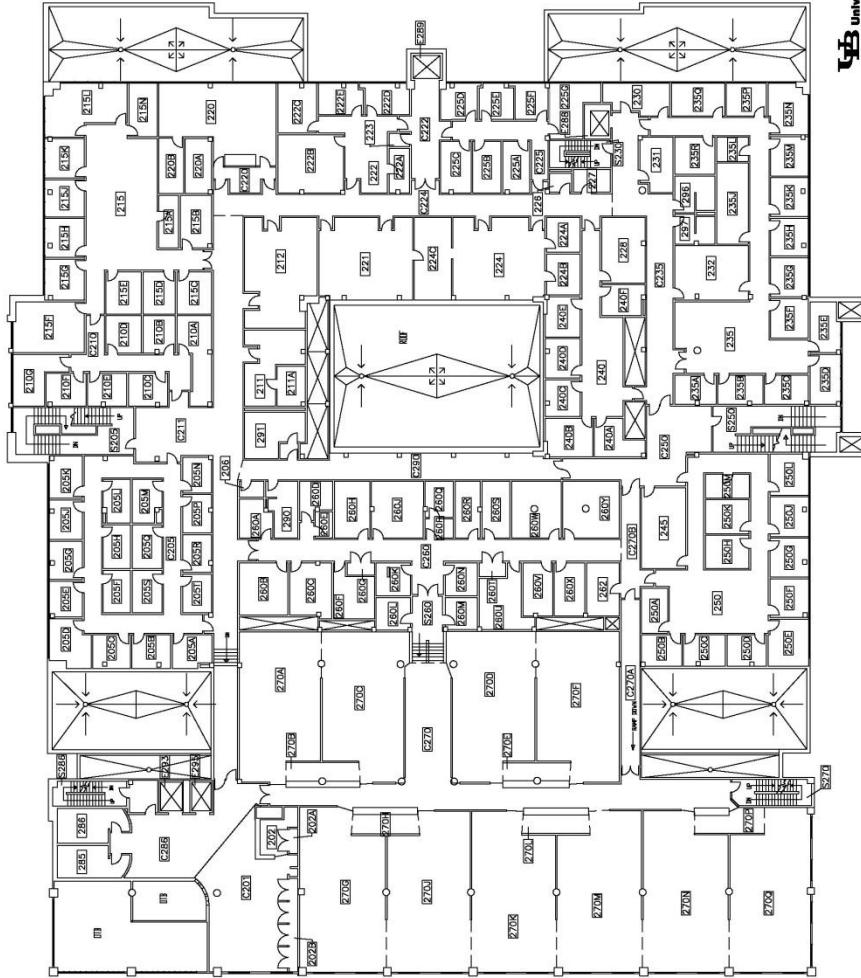
For additional questions regarding the WREB Examination at Buffalo, please contact:

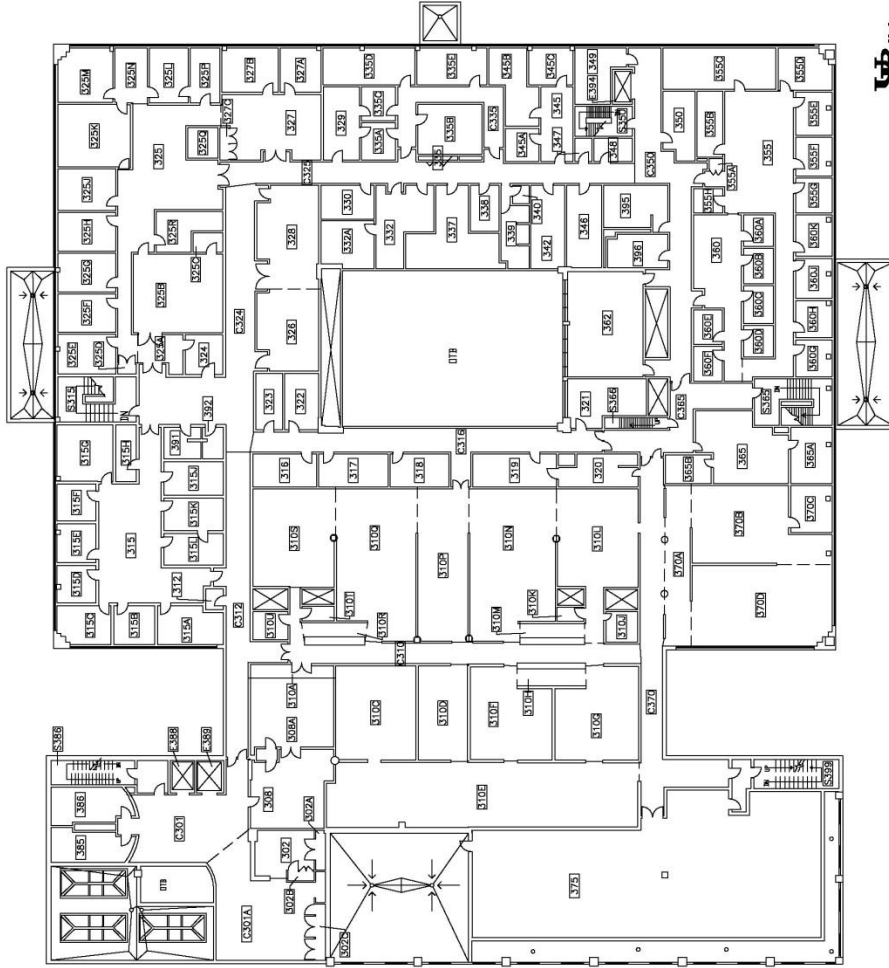
Dr. Fadi Ayoub, WREB Coordinator
 235-A Squire Hall
 3435 Main Street
 Buffalo, NY 14214

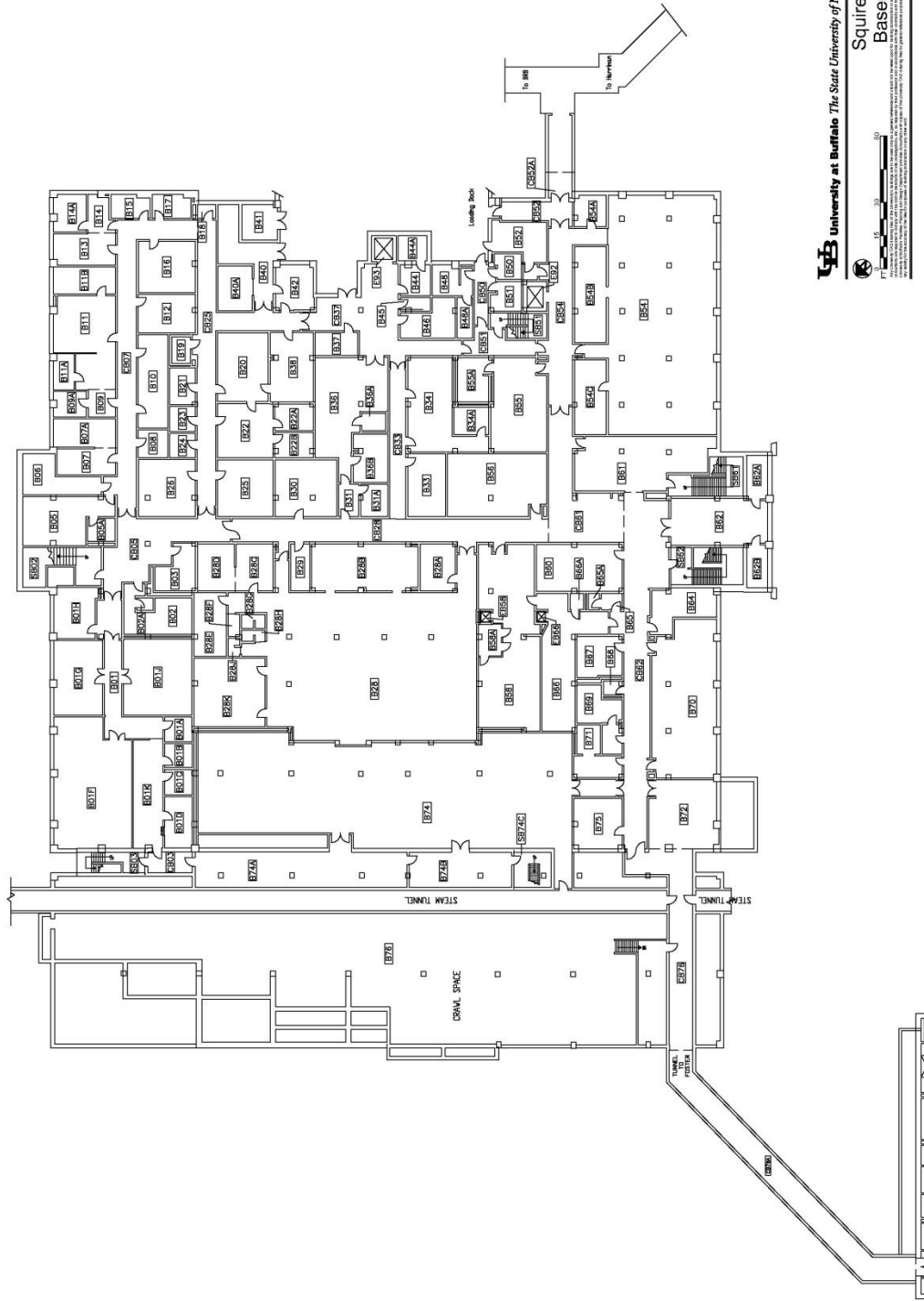
716-829-2862
716-829-2440 (fax)
ayoub@buffalo.edu



8/22/2008 1:19:44 PM







12/12/2008 4:14:38 PM